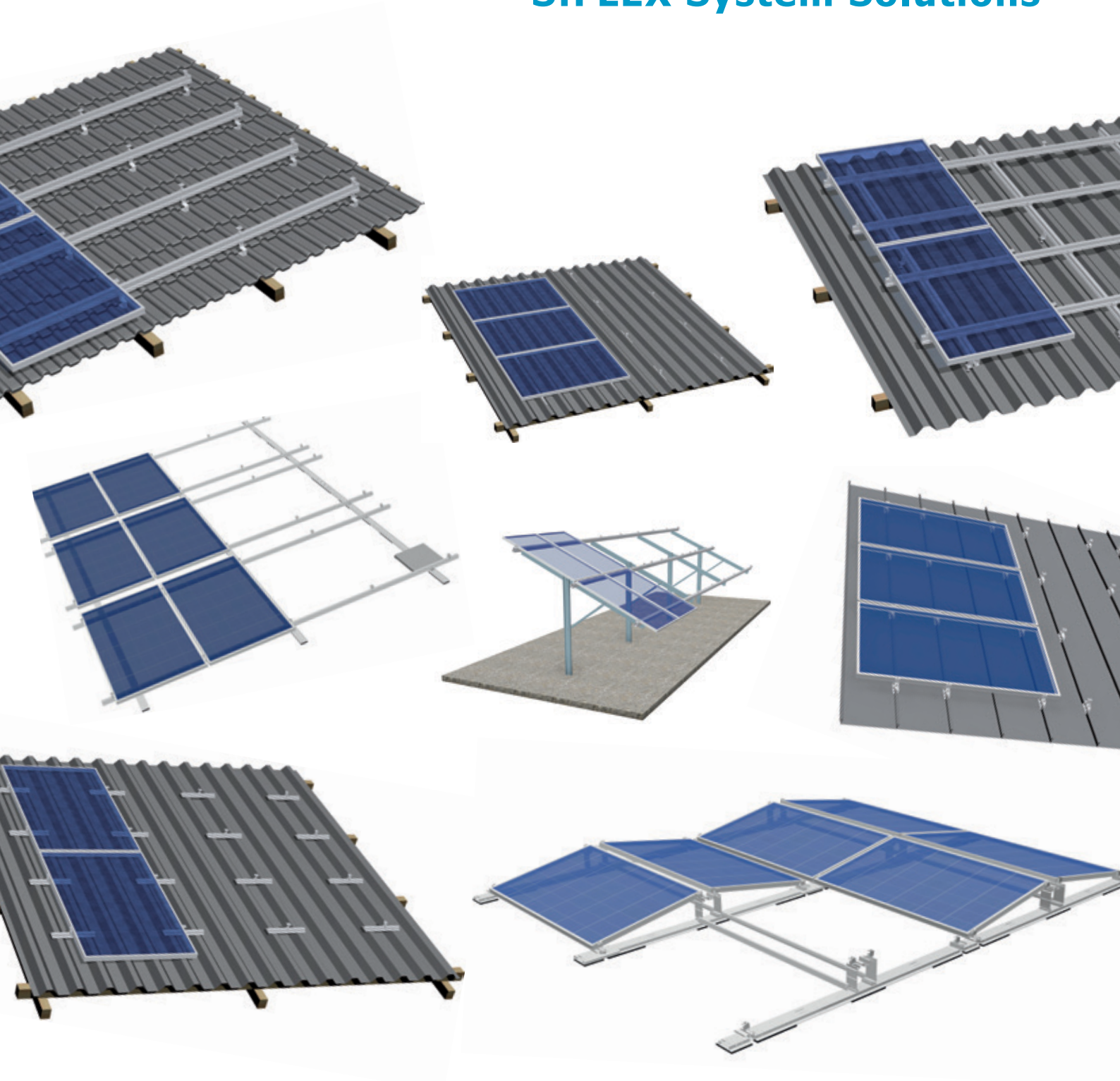




S:FLEX System Solutions



Flat roof, pitched roof and ground mount structures for flexible and fast installations

Pitched roof, flat roof, ground-mounted — system-based mounting solutions by S:FLEX

S:FLEX mounting systems stand for functionality based on simple assembly and largely preconfigured components. They provide flexible solutions for both flat and pitched roofs as well as for ground-mounted installations.

Fast installation, low freight and storage costs, optimal structural values and a long service life — these are the features that we pay attention to when manufacturing our proven components and developing new systems and parts.

Our mounting systems for sheet metal roofing are manufactured in a particularly material-saving manner and with optimal ergonomics. Using our suitably trimmed, pre-drilled trapezoidal sheet metal rail with sealing tape covered underside or the ST-AK 1/12 mounting rail, PV systems can be installed quickly and cleanly on all common types of trapezoidal sheeting.

For cost-efficient installation of modules without roof penetration on roofs with standing seam profiles, we offer the S:FLEX standing seam clamp. Ideal for direct module mounting with our clickable end and middle clamps, it can also be used in combination with our rails and cross adapter clamps.

The S:FLEX Flat Direct System for pitched roofs can be installed with minimal ballasting and without roof penetration on pitched roofs with foil or bitumen coverings and sandwich elements. This makes it especially suitable for commercial buildings with low load-bearing capacities. The structural properties of Flat Direct with air gaps between the modules produce a suction effect in the direction of the roof and achieve the best possible rear ventilation. If necessary, special ridge connectors, counterweights or mechanical couplings can be used to ensure additional safety when anchoring.

The S:FLEX Delta Triangle was designed for installing elevated systems on flat and slightly inclined roofs. Available with pitch angles from 5° to 45°, it is delivered pre-assembled, but folded up — thus significantly reducing transport costs.

Pitched Roof Systems

Roof hooks	04
Roof integration	05
Hanger bolts and solar fasteners	06
Trapezoidal sheet metal rail Vario	07
Trapezoidal sheet metal rails	08
Trapezoidal sheet metal rail Lift	09
Longitudinal sheet metal rails	10
Brackets for sheet metal	11
Standing seam clamp	12, 13
Standing seam clamp DCO	14, 15
Standing seam clamp CL	16, 17
Delta triangles with hanger bolts	18
Delta triangles with trapezoidal sheet metal rails	19
Flat Direct for foil and bitumen roofs	20

Flat Roof Systems

Delta triangles with ballast	21
LEICHTmount RAIL S/ EW with low ballast	22, 23
LEICHTmount 2.1 S/ EW with low ballast	24, 25

Ground-Mount Systems

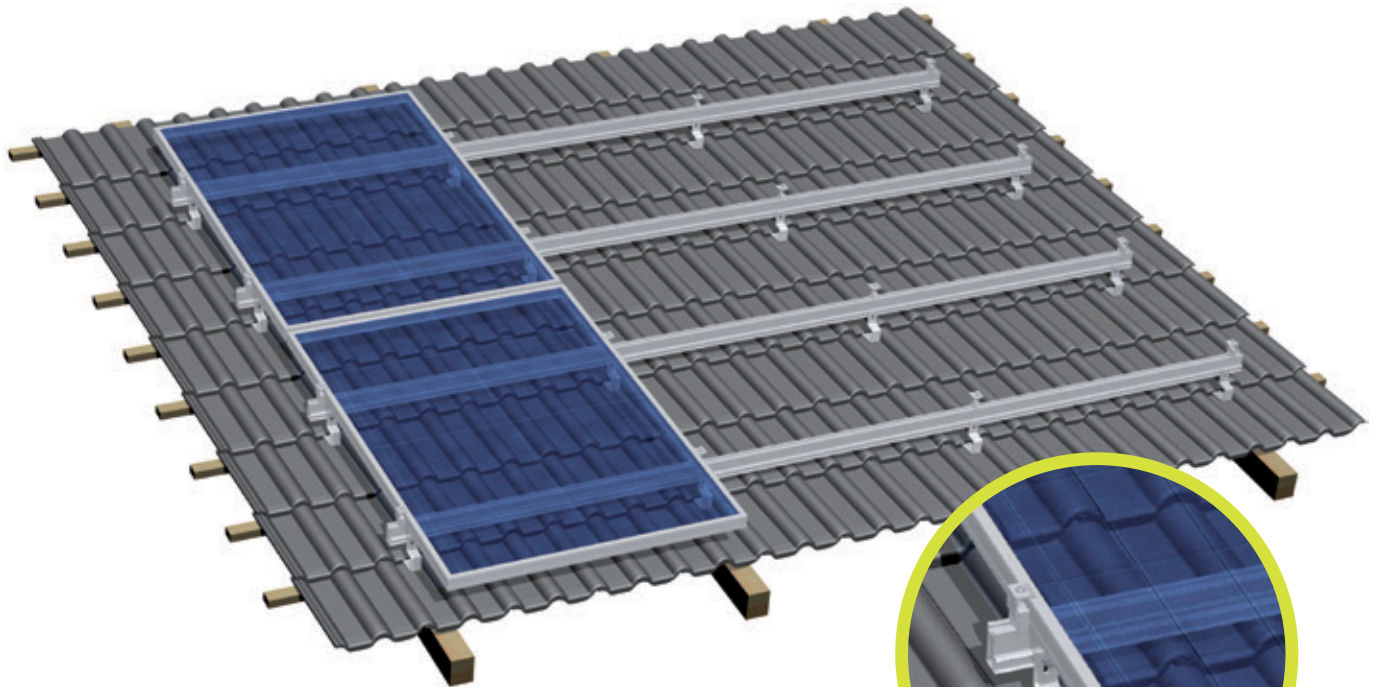
LEICHTmount Ground Mount S/ EW with ballast	26, 27
Carports Single/ Double	28, 29
System with rammed post/ ground screw/ concrete foundation	30

Mounting Kits

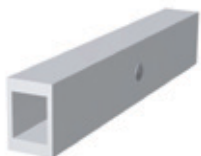
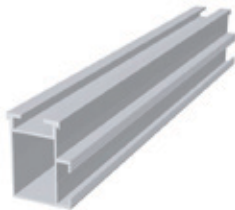
Ground mount system kit	31
Pitched roof mounting kit	32

Contact

S:FLEX offices internationally	33
--------------------------------	----



Mounting rail ST-AK 7/47



Splice 7 SP

End clamp EH AK II Klick 30-50 A



Mid-clamp MH AK II Klick 30-50 A

Roof hook Alu 93-7-45



Application:

Pitched roof with tiles

Fastening:

Roof hooks onto rafters

Roof pitch:

Up to 60 degrees

Module type:

Framed and frameless modules

Module orientation:

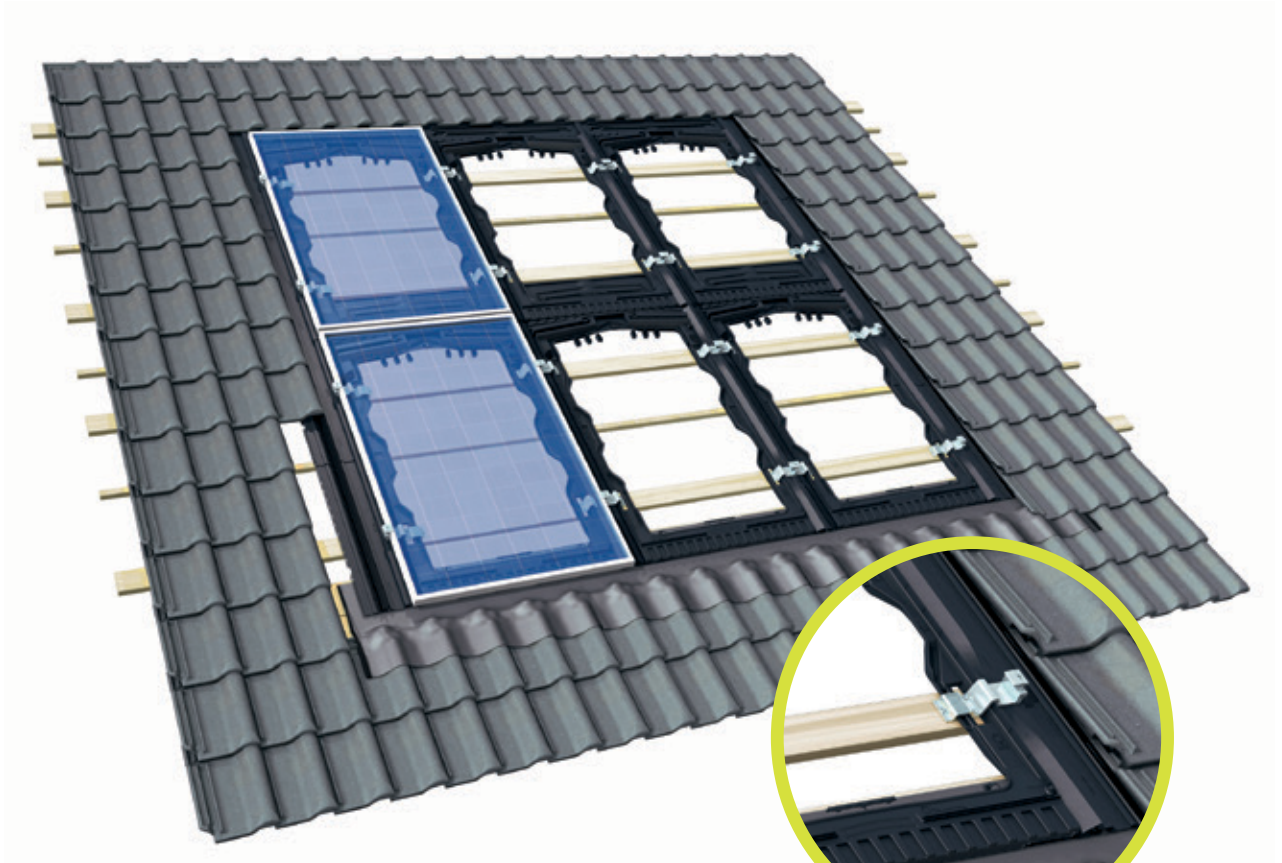
Landscape/portrait

Layers of rails:

Single/double layer, cross rail installation

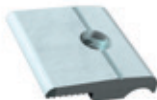
Advantages:

- Every size of module array possible
- Height compensation: 40–58 mm in the batten zone / 21 mm in the rail zone
- For all common rafter distances



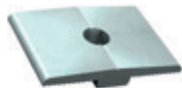
Outer clip

End clamp



Double clip

Mid-clamp



Frame

Application:

Pitched roof with tiles

Fastening:

Module supports on new transverse beams

Roof pitch:

10 to 50 degrees

Module type:

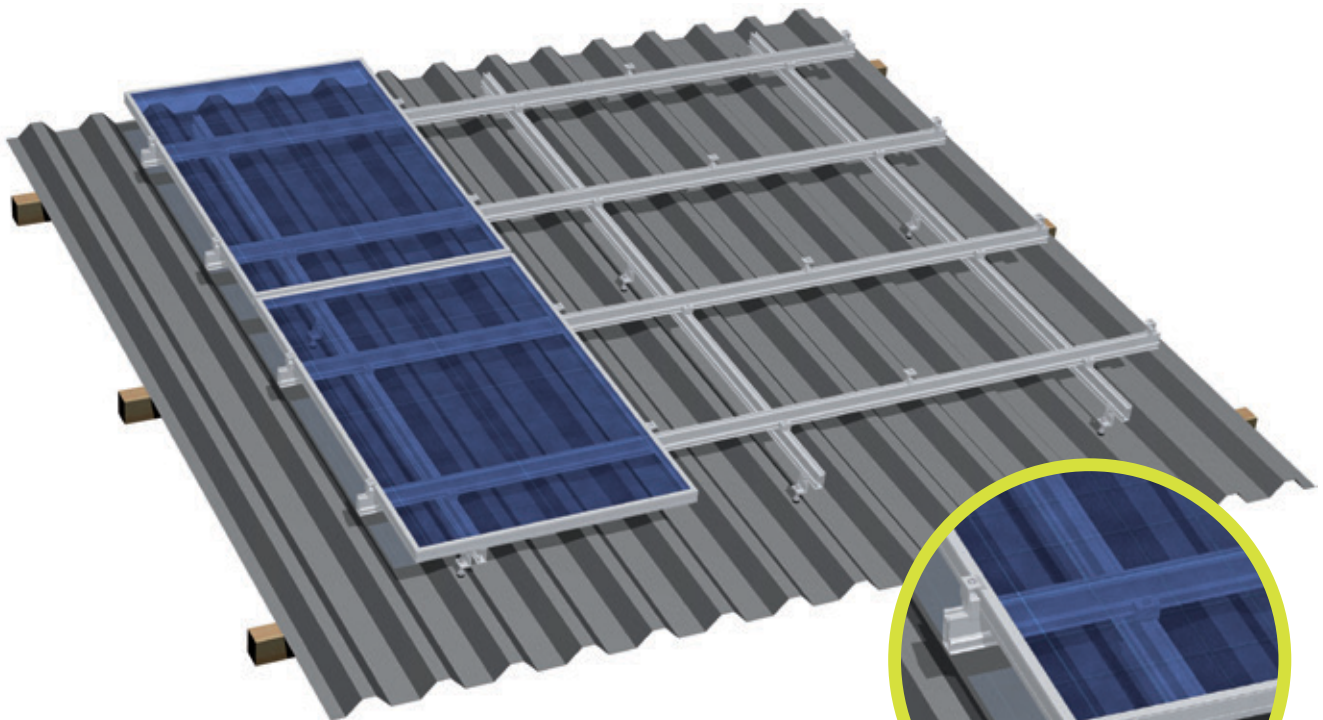
Framed modules

Module orientation:

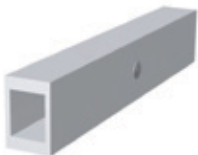
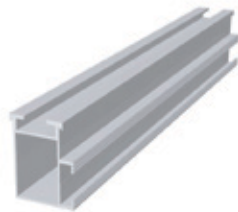
Landscape/portrait

Advantages:

- Every size of module array possible
- Certified to provide a complete seal to the roof according to CSTB
- For all common rafter distances
- For all common module sizes
- Optionally include module earthing
- Roof edge connections via the system



Mounting rail ST-AK 7/47



Splice 7 SP

End clamp EH AK II Klick 30-50 A



Mid-clamp MH AK II Klick 30-50 A

Hanger bolt A2



Bracket 60mm M10



Application:

Fibre-cement boards / sandwich elements /
trapezoidal sheet metal

Fastening:

Hanger bolts / solar fasteners with brackets

Module type:

Framed and frameless modules

Module orientation:

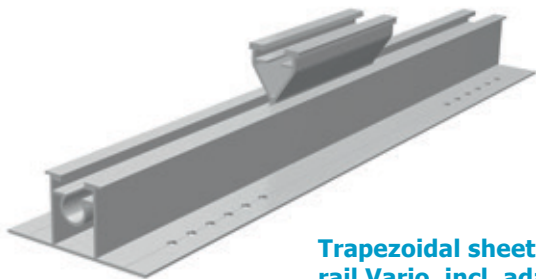
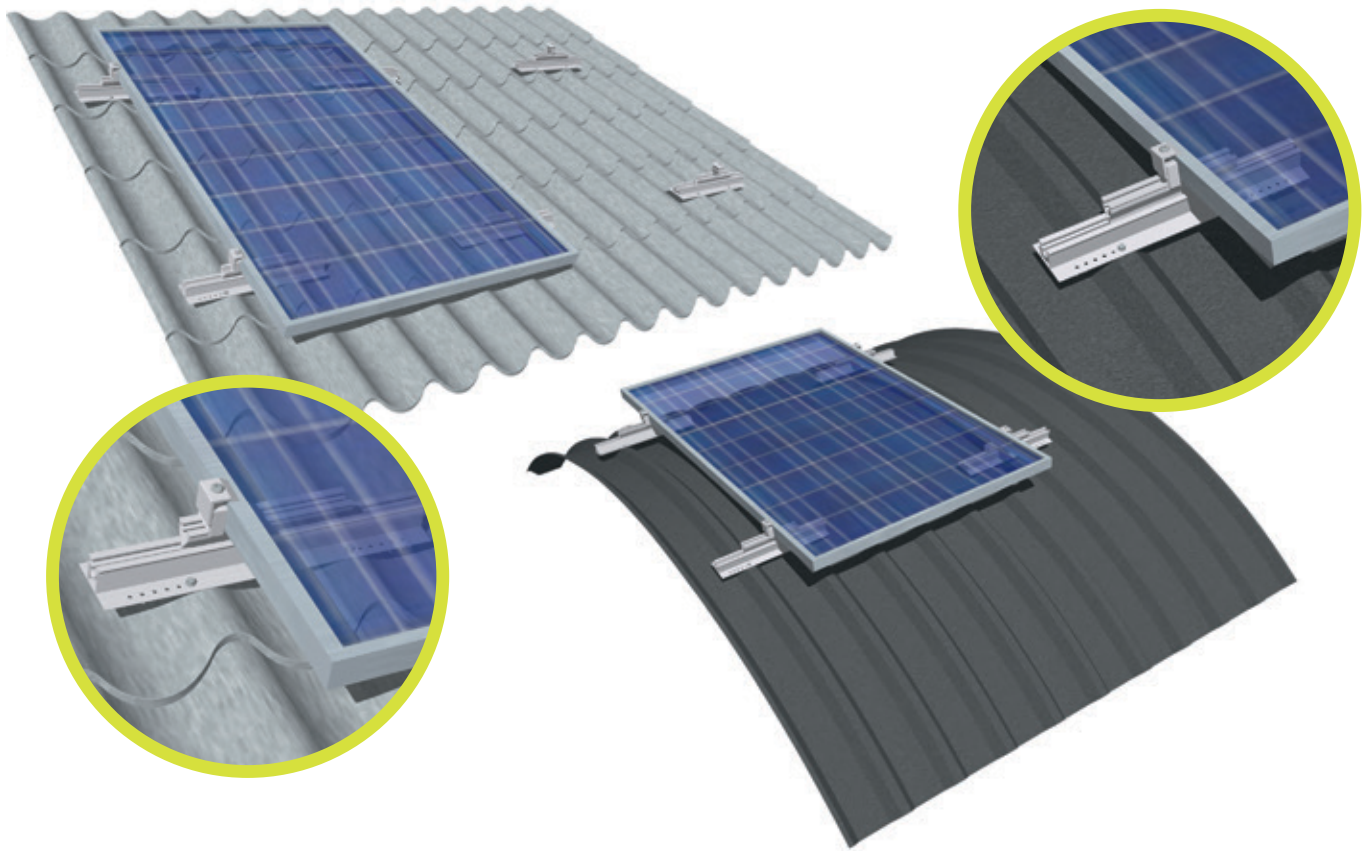
Landscape / portrait

Layers of rails:

Single / double layer, cross rail installation

Advantages:

- Low fitting costs
- Height adjustable
- suitable for large distances between rafters



Trapezoidal sheet metal rail Vario, incl. adapter

End clamp EH AK II Klick 30-50 A



Mid-clamp MH AK II Klick 30-50 A

Application:

Corrugated roof tile and curved trapezoidal sheet metal (barrel roofs with a radius larger than 3.5m)

Fastening:

Riveted or screwed with sheet metal screws to the raised seams

Module type:

Framed modules

Module orientation:

Vertical/horizontal

Module / roof inclination:

Max. 20° towards horizon

Max. load:

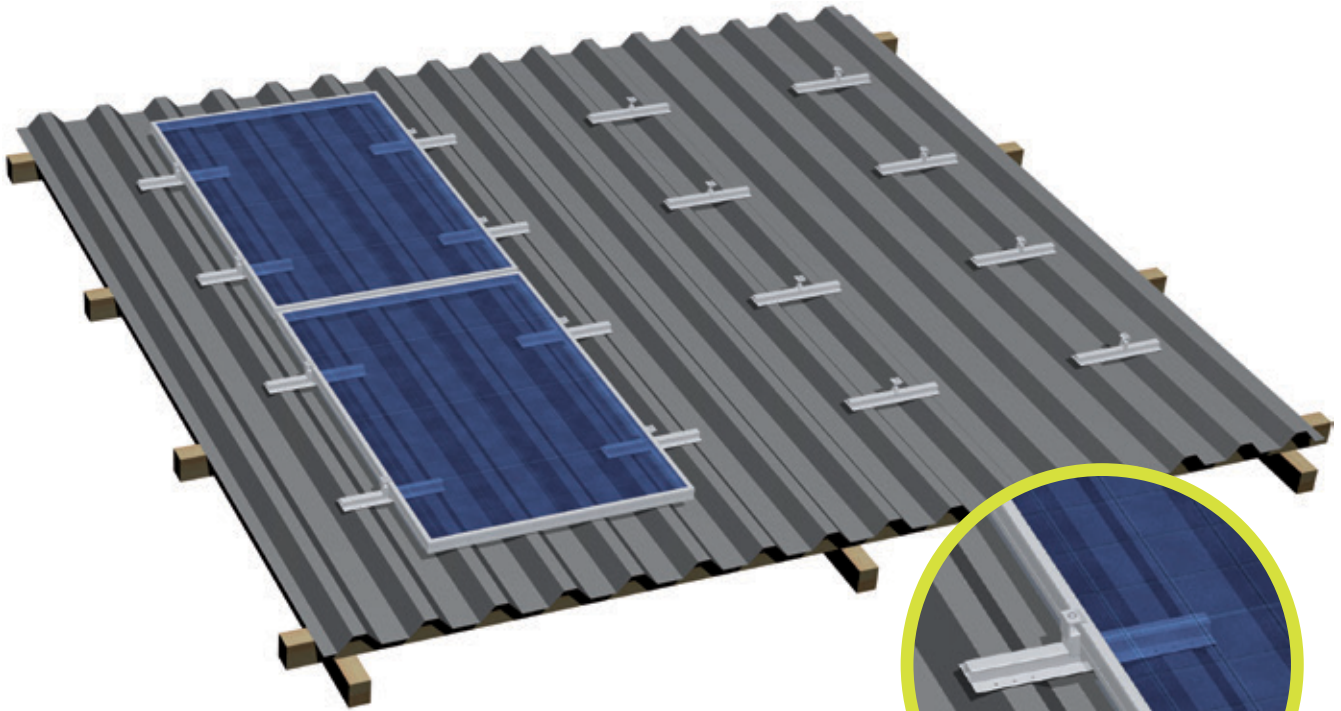
5.4 kN/m² (wind and snow load combined)

Seam spacings:

100 – 333 mm

Sheet metal thickness:

Sheet steel min. 0.5 mm/Aluminium min. 0.8 mm



Trapezoidal sheet metal rail AK
l=395 / 24

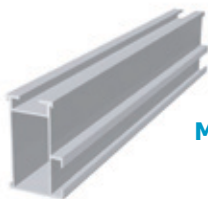


End clamp EH AK II Klick 30-50 A



Mid-clamp MH AK II Klick 30-50 A

Cross adapter clamp AK



Mounting rail ST-AK 13/60

Application:

Trapezoidal and corrugated sheet metal

Fastening:

Riveted or screwed onto raised corrugations

Module type:

Framed and frameless modules

Module orientation:

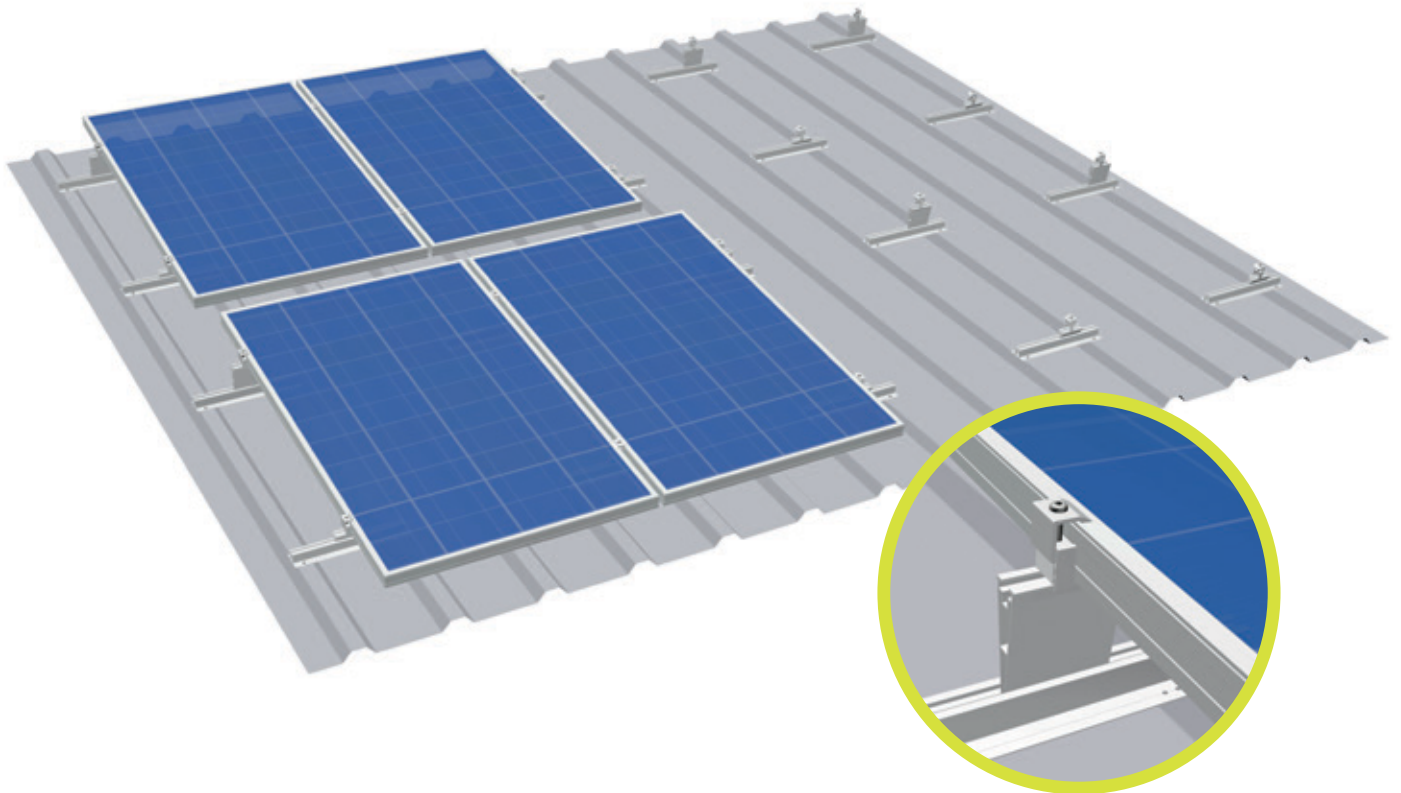
Landscape/ portrait

Layers of rails:

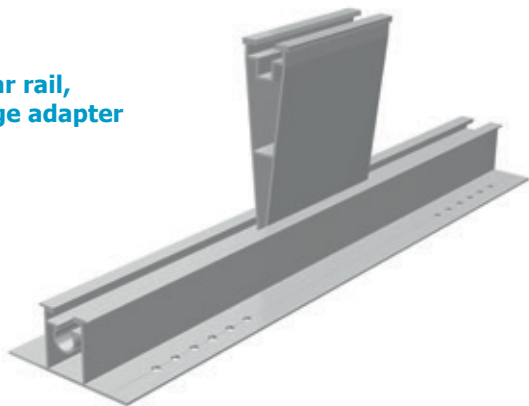
Single/ double layer, cross rail installation

Advantages:

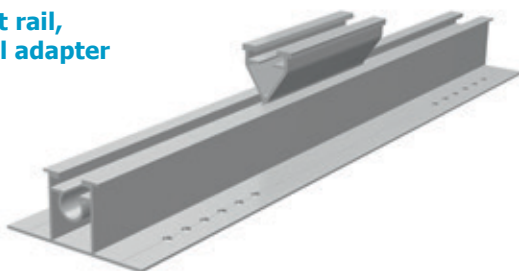
- Low material/ fitting costs
- Every size of module array possible
- Rail lengths of 395 mm, 3150 mm and 6200 mm
- High rigidity rails suitable for heavier loads
- Rail segments 395 mm (Trapezoidal sheet metal AK complete / l=395 mm) are supplied prefabricated with 24 holes and sealing tape covered bottom side



Rear rail,
large adapter



Front rail,
small adapter



Application:

Trapezoidal sheet metal

Fastening:

Riveted or screwed with sheet metal screws to the raised seams

Module type:

Framed modules

Module orientation:

Vertical/horizontal

Module pitch:

5° with vertical installation/7° with horizontal installation

Module inclination:

Max. 20° towards horizon

Max. roof pitch:

15° with vertical installation/13° with horizontal installation

Max. load:

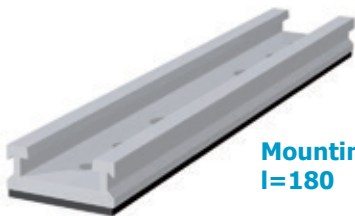
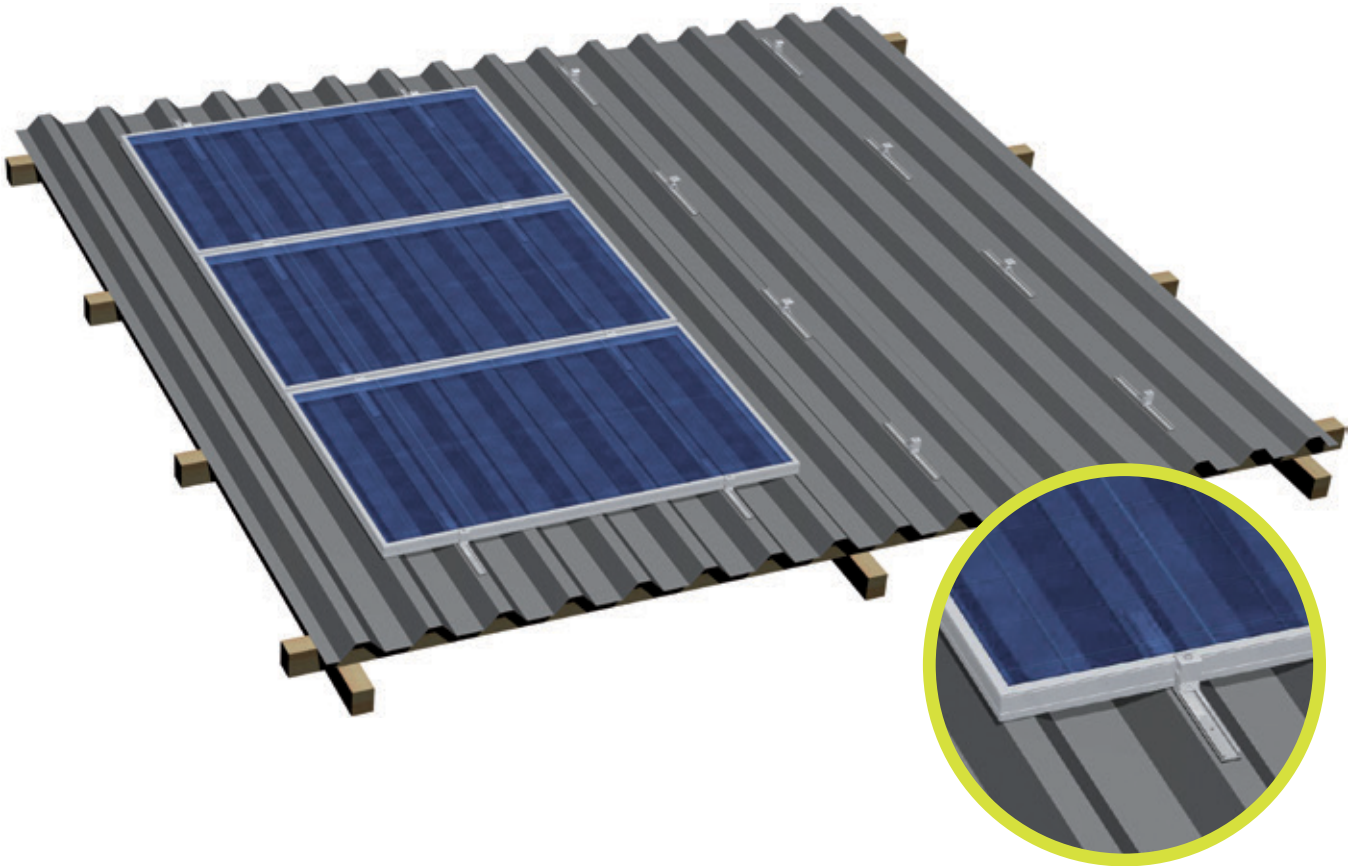
5.4 kN/m² (wind and snow load combined)

Seam spacings:

100 – 333 mm

Sheet metal thickness:

Sheet steel min. 0.5 mm/Aluminium min. 0.8 mm



Mounting rail ST-AK 1/12
l=180

End clamp EH AK II Klick 30-50 A



Mid-clamp MH AK II Klick 30-50 A

Application:

Trapezoidal sheet metal

Fastening:

Riveted or screwed onto raised corrugations

Module type:

Framed modules

Module orientation:

Landscape

Layers of rails:

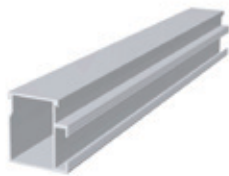
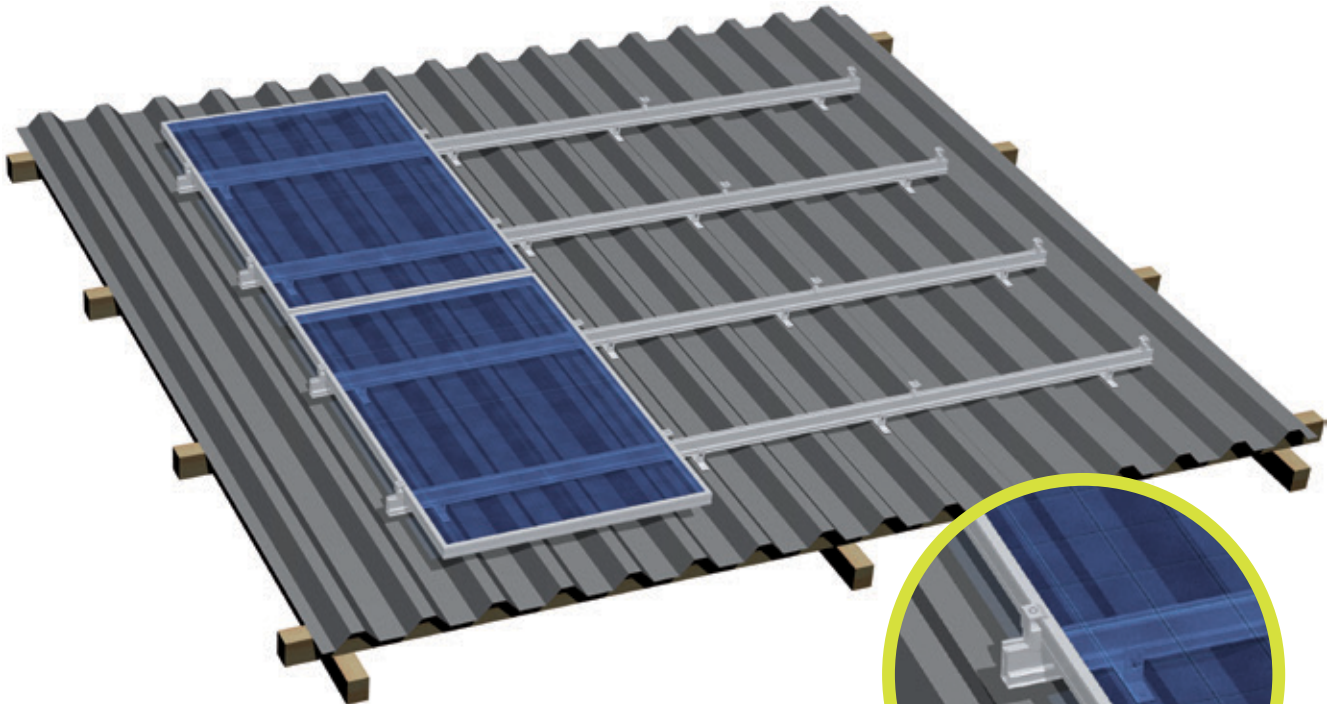
Single layer

Advantages:

- Low material / fitting costs
- Every size of module array possible
- Rail lengths of 180 mm, 3150 mm and 6200 mm
- Rail segments 180 mm (ST-AK 1/12 complete / l=180mm) are supplied prefabricated with 3 x 2 holes (5 mm / 6.5 mm / 8.5 mm) and sealing tape covered bottom side

Note:

Respective clearances between raised corrugations required for optimum module fastening must be adhered to



Mounting rail ST-AK 5/40

Bracket for sheet metal installation



Cross adapter clamp AK

Mounting rail ST-AK 13/60



Mid-clamp MH AK II Klick 30-50 A

End clamp EH AK II Klick 30-50 A



Application:

Trapezoidal and corrugated sheet metal

Fastening:

Riveted or screwed onto raised corrugations

Module type:

Framed and frameless modules

Module orientation:

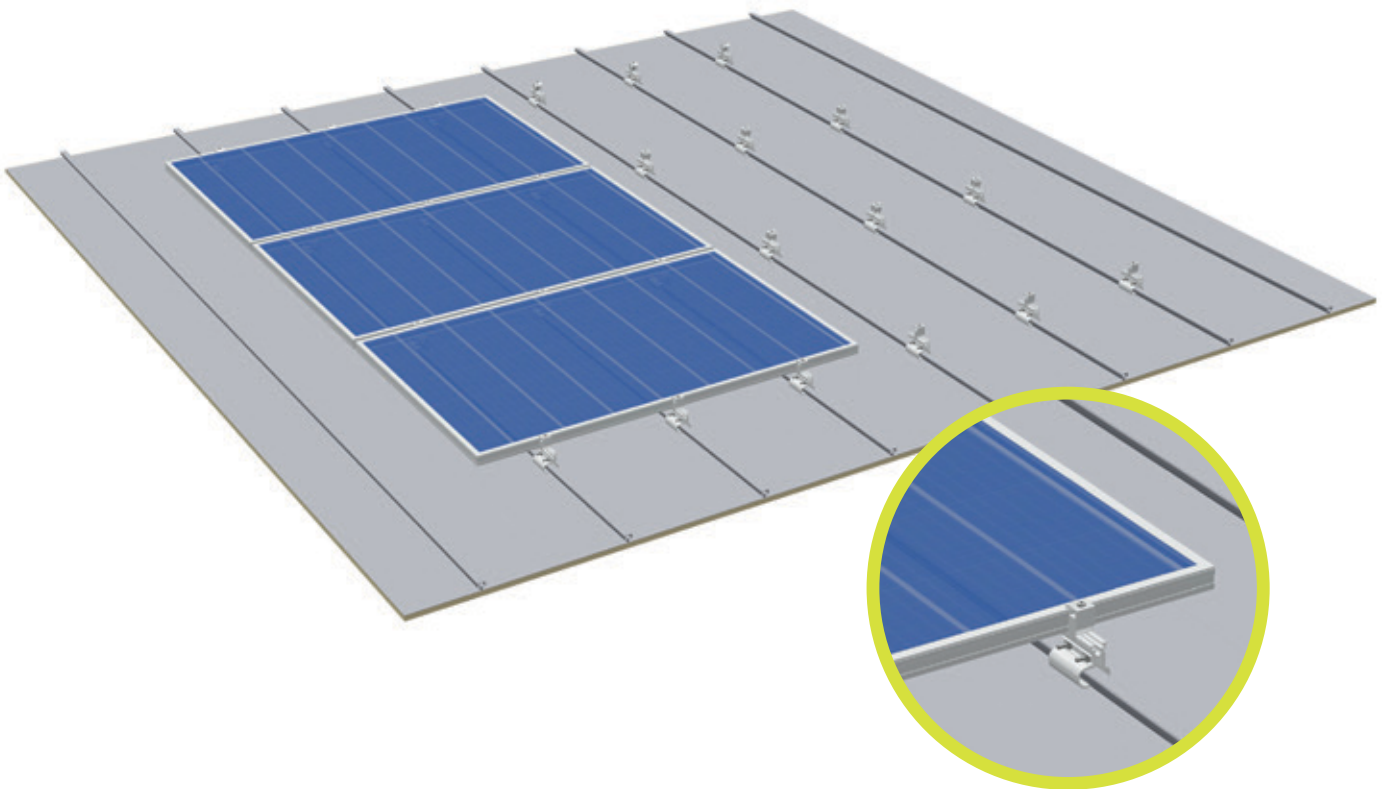
Landscape/ portrait

Layers of rails:

Single/ double layer, cross rail installation

Advantages:

- Low fitting costs
- Every size of module array possible
- Height adjustable via elongated hole in the sheet metal bracket



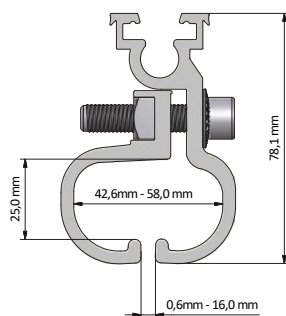
Standing Seam Clamp 2.1



End clamp AK II Klick 30-50 A



Mid clamp AK II Klick 30-50 A



Application:

Seamed roofing

Fastening:

Non-penetrative

Module type:

Framed modules

Module orientation:

Horizontal/vertical (for clamping on the short side)

Layers of rails:

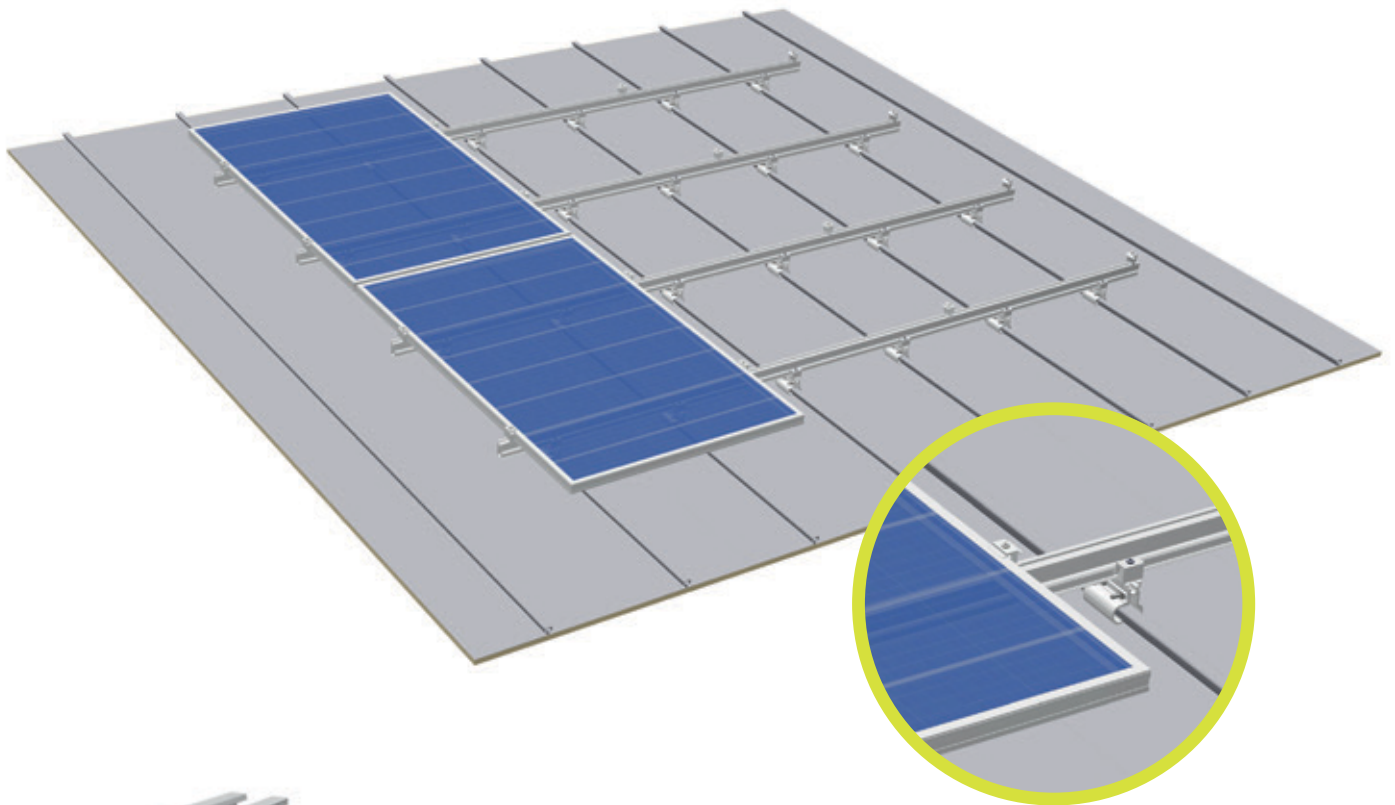
Single layer

Advantages:

- No rails necessary
- Low material/logistics/installation costs
- Quick mounting
- No roof penetration

Note:

The respective clearances between the raised corrugations required for optimum fastening of the modules must be adhered to



Standing Seam Clamp 2.1

End clamp AK II Klick 30-50 A



Mid clamp AK II Klick 30-50 A

Cross adapter clamp AK



Rail ST-AK 13/60

Application:

Seamed roofing

Fastening:

Non-penetrative

Module type:

Framed modules

Module orientation:

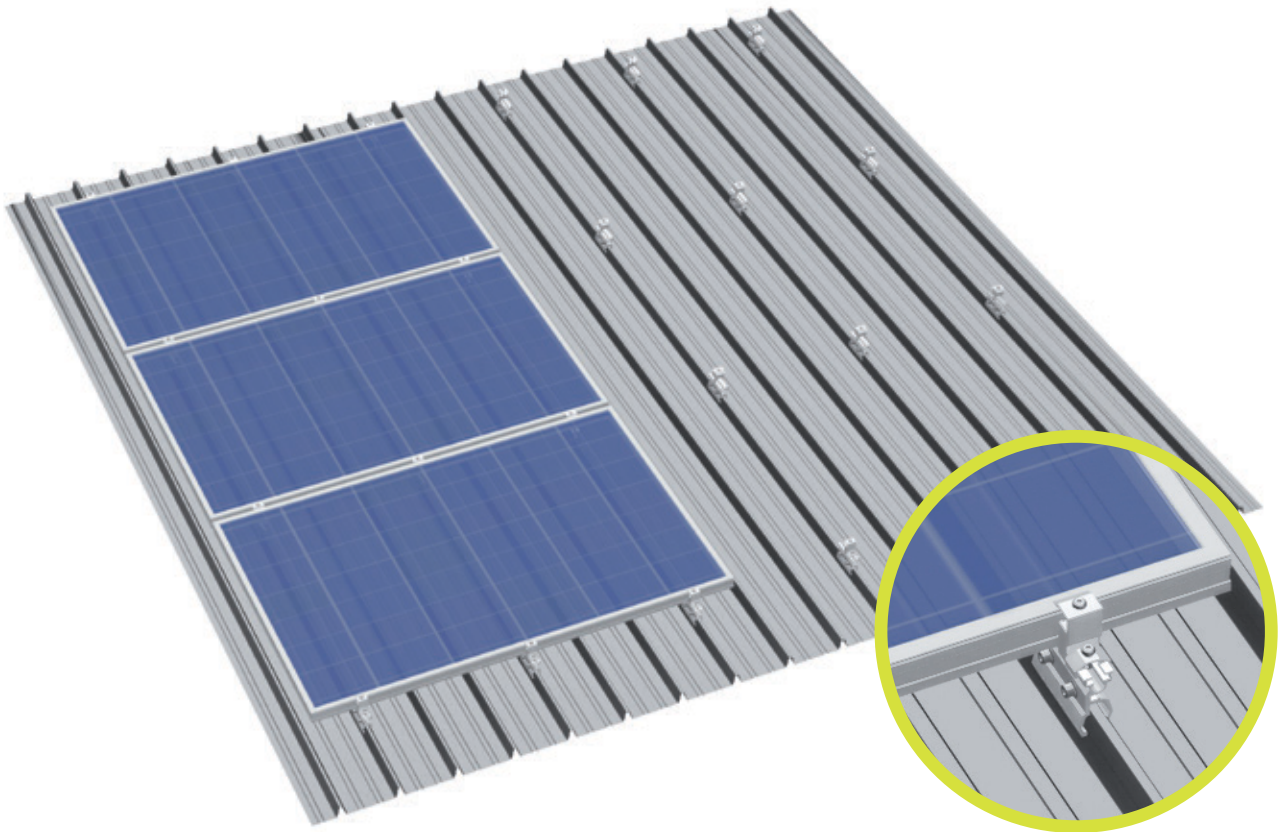
Vertical/horizontal (depending on approval from the module manufacturer)

Layers of rails:

Single/double layer, cross rail installation

Advantages:

- Low material/installation costs
- Length of rails 3150 mm to 6200 mm
- High rigidity rails suitable for heavier loads

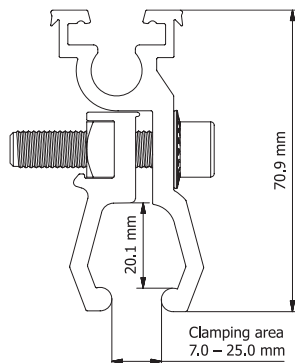


Standing Seam Clamp DCO

End clamp AK II Klick 30-50 A



Mid clamp AK II Klick 30-50 A



Application:

Domitec/GBS profiles or identical in construction

Fastening:

Non-penetrative

Module type:

Framed modules

Module orientation:

Landscape/ portrait (depending on approval from the module manufacturer)

Layers of rails:

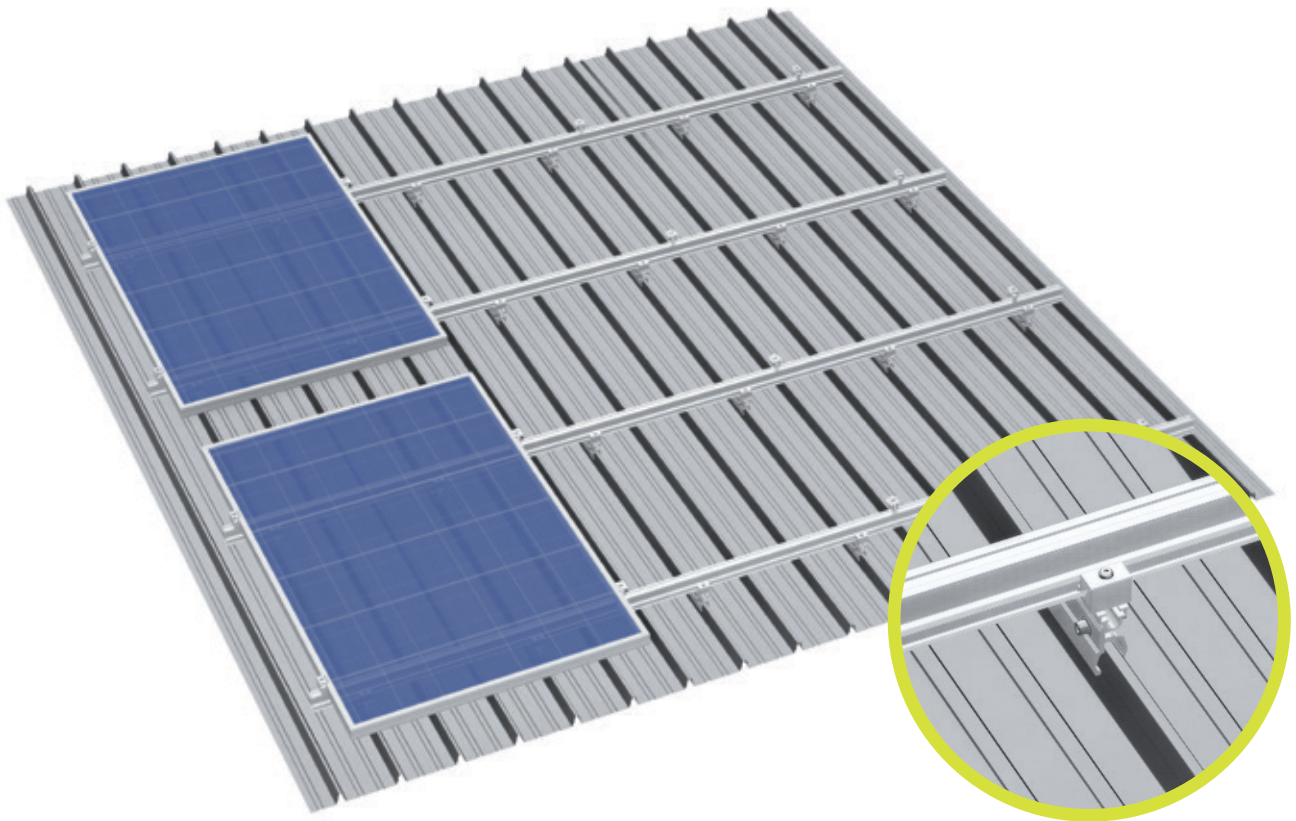
Single layer

Advantages:

- No rails necessary
- Low material/logistics/installation costs
- Quick mounting
- No roof penetration

Note:

The respective clearances between the raised corrugations required for optimum fastening of the modules must be adhered to



Standing Seam Clamp DCO

End clamp AK II Klick 30-50 A



Mid clamp AK II Klick 30-50 A

Cross adapter clamp AK



Rail ST-AK 13/60

Application:

Domitec/GBS profiles or identical in construction

Fastening:

Non-penetrative

Module type:

Framed modules

Module orientation:

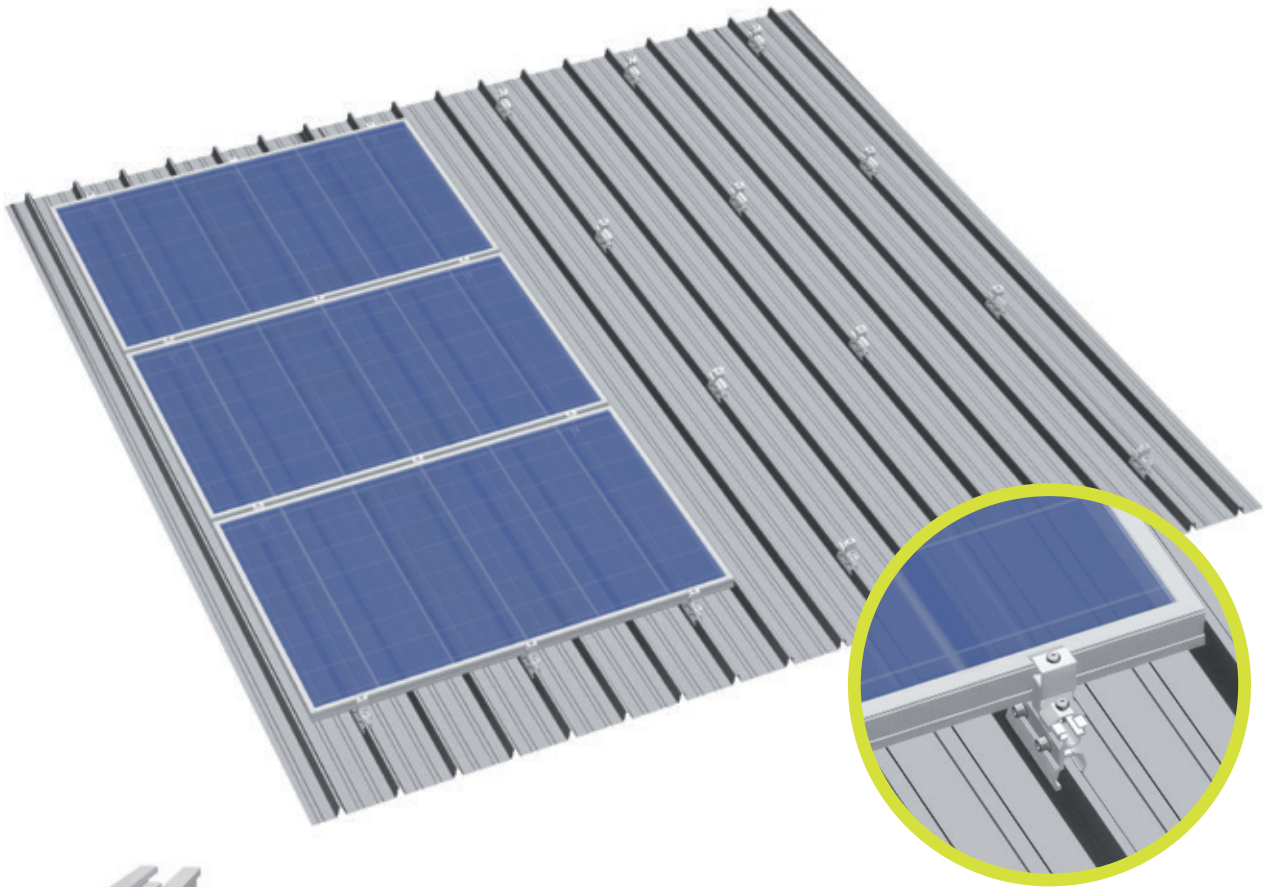
Portrait/landscape (depending on approval from the module manufacturer)

Layers of rails:

Single/double layer, cross rail installation

Advantages:

- Low material/installation costs
- Length of rails 3150 mm to 6200 mm
- High rigidity rails suitable for heavier loads

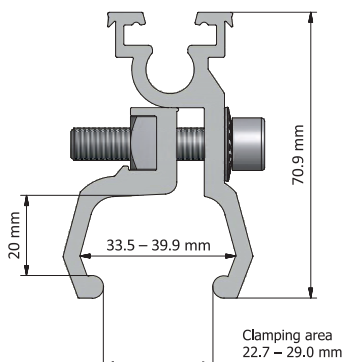


Standing Seam Clamp CL

End clamp AK II Klick 30-50 A



Mid clamp AK II Klick 30-50 A



Application:

Klip-Lok profiles or identical in construction

Fastening:

Non-penetrative

Module type:

Framed modules

Module orientation:

Landscape/ portrait (depending on approval from the module manufacturer)

Layers of rails:

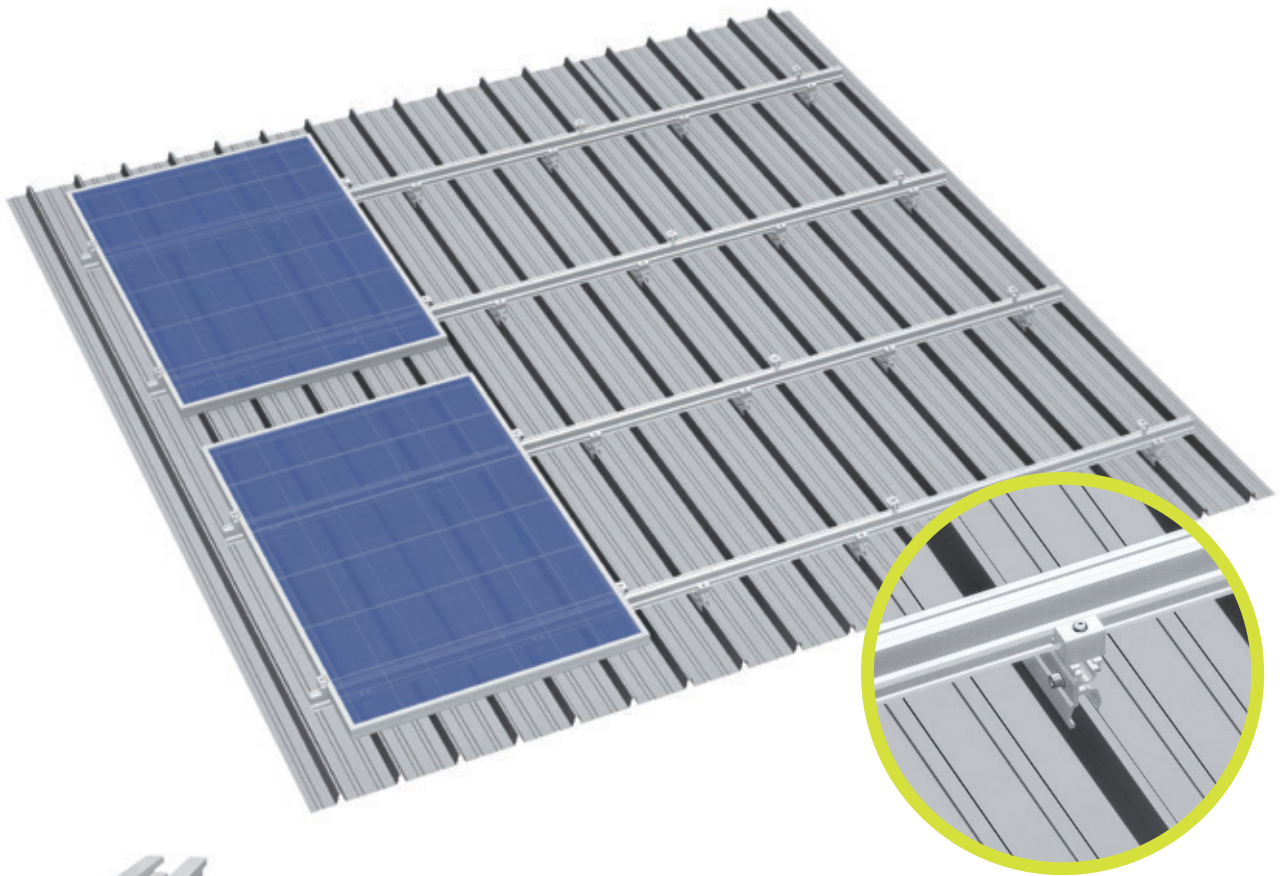
Single layer

Advantages:

- No rails necessary
- Low material/logistics/installation costs
- Quick mounting
- No roof penetration

Note:

The respective clearances between the raised corrugations required for optimum fastening of the modules must be adhered to



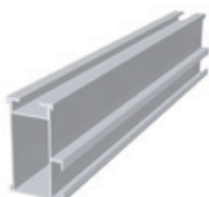
Standing Seam Clamp CL

End clamp AK II Klick 30-50 A



Mid clamp AK II Klick 30-50 A

Cross adapter clamp AK



Rail ST-AK 13/60

Application:

Klip-Lok profiles or identical in construction

Fastening:

Non-penetrative

Module type:

Framed modules

Module orientation:

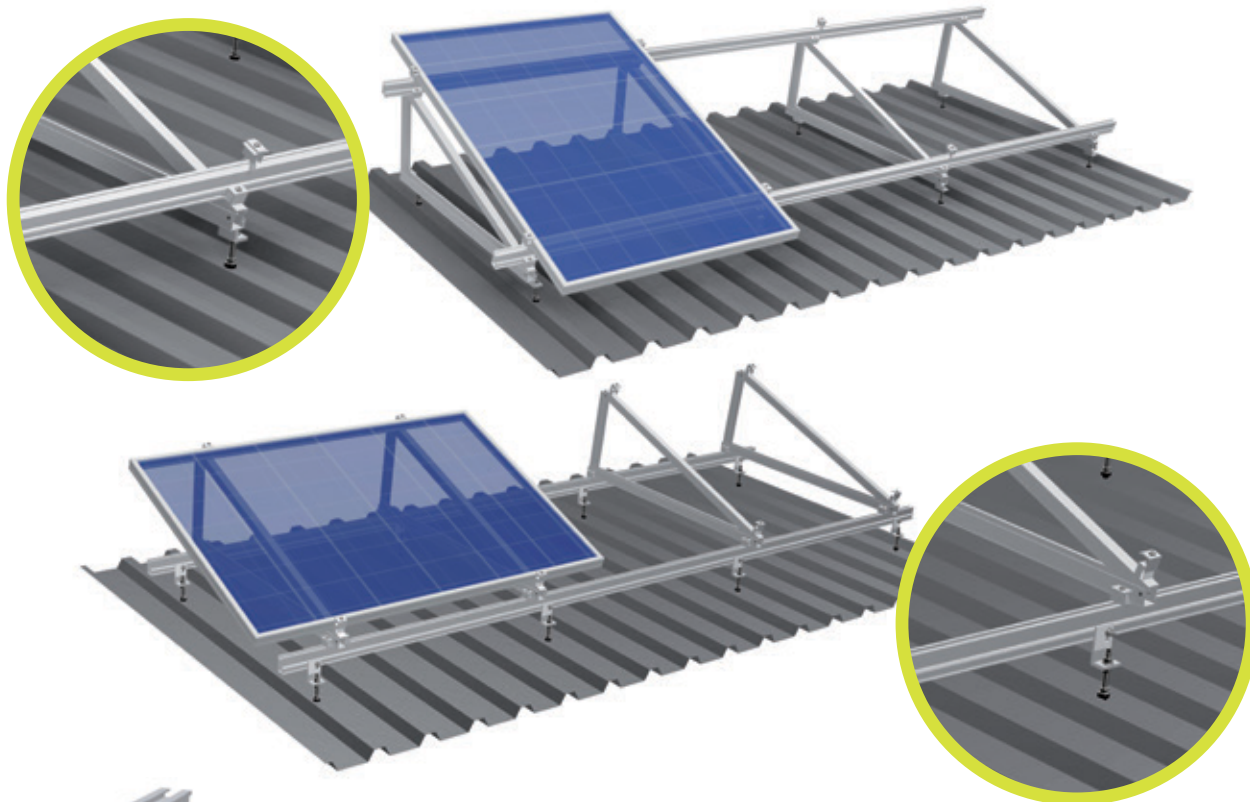
Portrait/landscape (depending on approval from the module manufacturer)

Layers of rails:

Single/double layer, cross rail installation

Advantages:

- Low material/installation costs
- Length of rails 3150 mm to 6200 mm
- High rigidity rails suitable for heavier loads



Mounting rail ST-AK 13/60

End clamp EH AK II Klick 30-50 A



Mid-clamp MH AK II Klick 30-50 A

Cross adapter clamp AK



S:FLEX Triangle
 Delta AK 1145 5° – 45°

Hanger bolt A2



Bracket 60mm M10



Application:

Fibre-cement boards / sandwich elements /
 trapezoidal sheet metal

Pitch:

Available in increments of 5°, other angles possible

Module type:

Framed and frameless modules

Module orientation:

Landscape / portrait

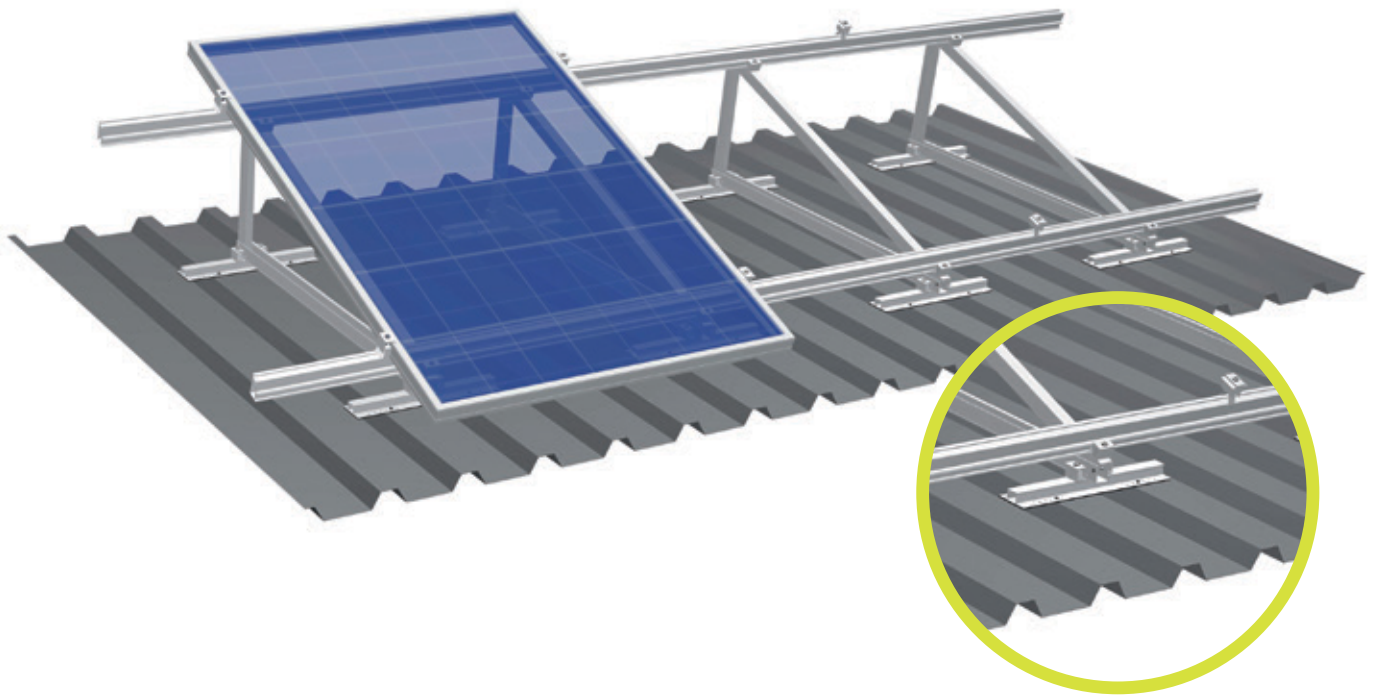
Advantages:

- Free choice of size and position of the module array possible
- Perfect also for small systems of 1, 2, 4 or 8 modules
- Triangles are shipped folded up for less freight and storage costs

Note:

Load bearing reserve of the roof has to be checked prior to installation

Other angles available upon request



Mounting rail ST-AK 13/60

End clamp EH AK II Klick 30-50 A



Mid-clamp MH AK II Klick 30-50 A

Cross adapter clamp AK



S:FLEX Triangle
Delta AK 1145 5° – 45°

Trapezoidal sheet
metal rail I=395



Application:

Trapezoidal and corrugated sheet metal

Pitch:

Available in increments of 5°, other angles possible

Module type:

Framed and frameless modules

Module orientation:

Landscape / portrait

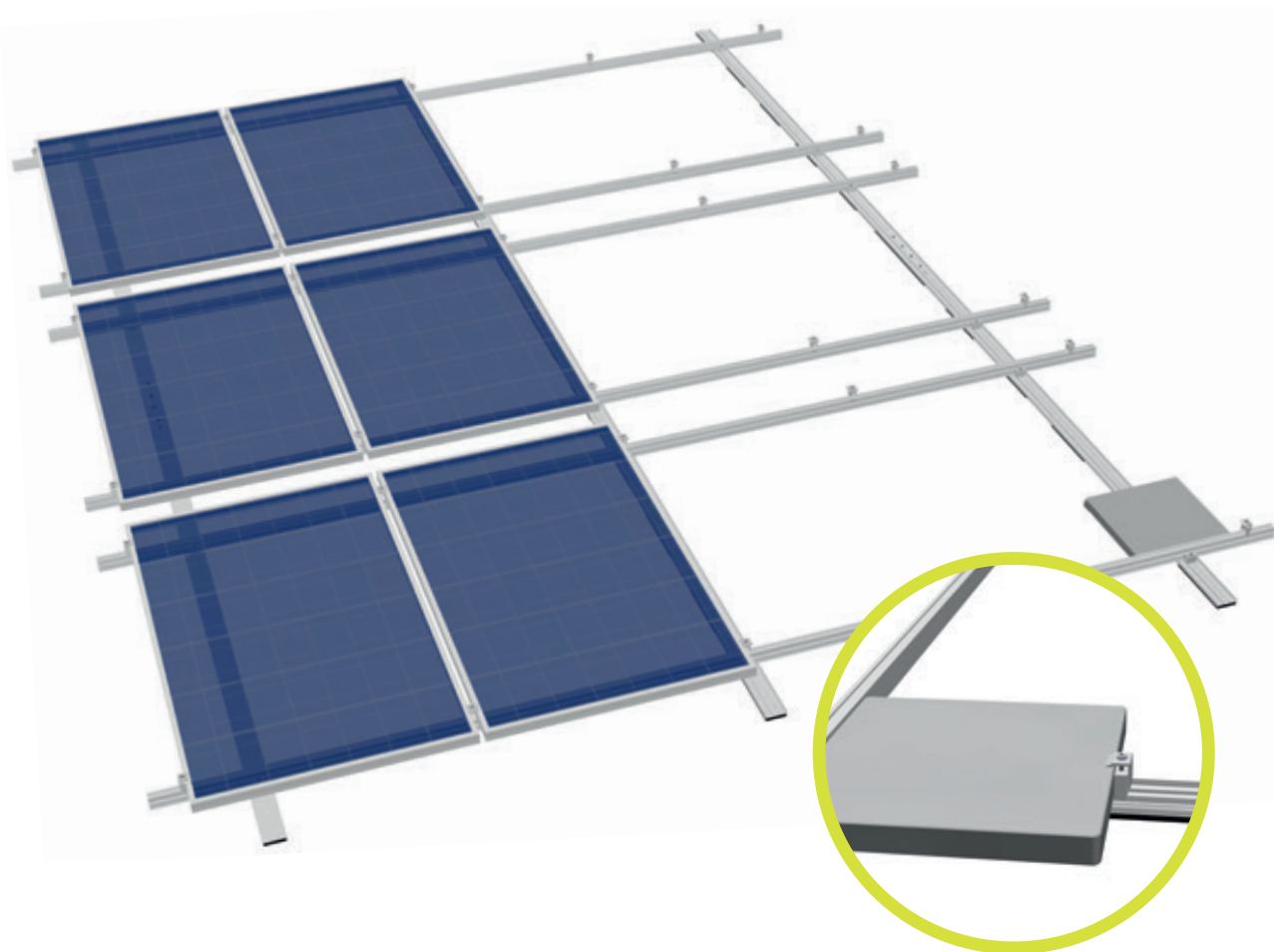
Advantages:

- Free choice of size and position of the module array possible
- Perfect also for small systems of 1, 2, 4 or 8 modules
- Triangles are shipped folded up for less freight and storage costs

Note:

Load bearing reserve of the roof has to be checked prior to installation

Other angles available upon request



Mono-pitch roof



Butterfly roof, double-sided



Butterfly roof, single-sided



Saddle roof, double-sided



Saddle roof, single-sided

... and other roof types

Application:

Pitched roofs with foil/bitumen roofing and sandwich elements, other roof types upon request

Fastening:

Non-penetrative

Roof pitch:

Up to 30 degrees

Module type:

Framed modules (frameless modules upon request)

Module orientation:

Landscape

Orientation:

Parallel to the roof

Building height:

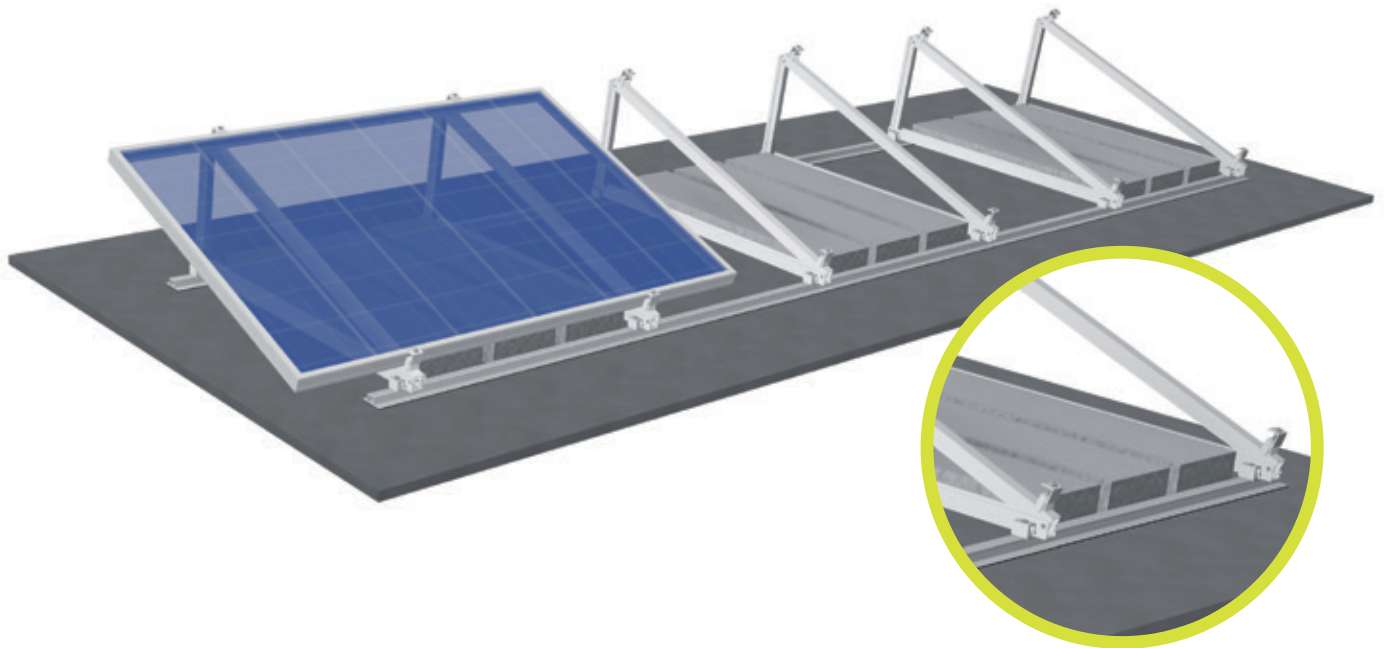
25 m max.

Wind load:

Up to wind load zone 4

Snow load:

Up to snow load zone 3



Mounting rail ST-AK 13/60

End clamp EH AK II Klick 30-50 A



Mid-clamp MH AK II Klick 30-50 A

Cross adapter clamp AK



S:FLEX Triangle
Delta AK 1145 5° – 45°

Trapezoidal sheet
metal rail I=6200



Application:

Flat roof

Pitch:

Available in increments of 5°, other angles possible

Module type:

Framed and frameless modules

Module orientation:

Landscape / portrait

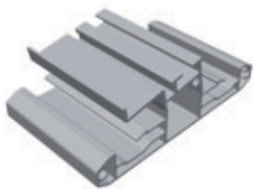
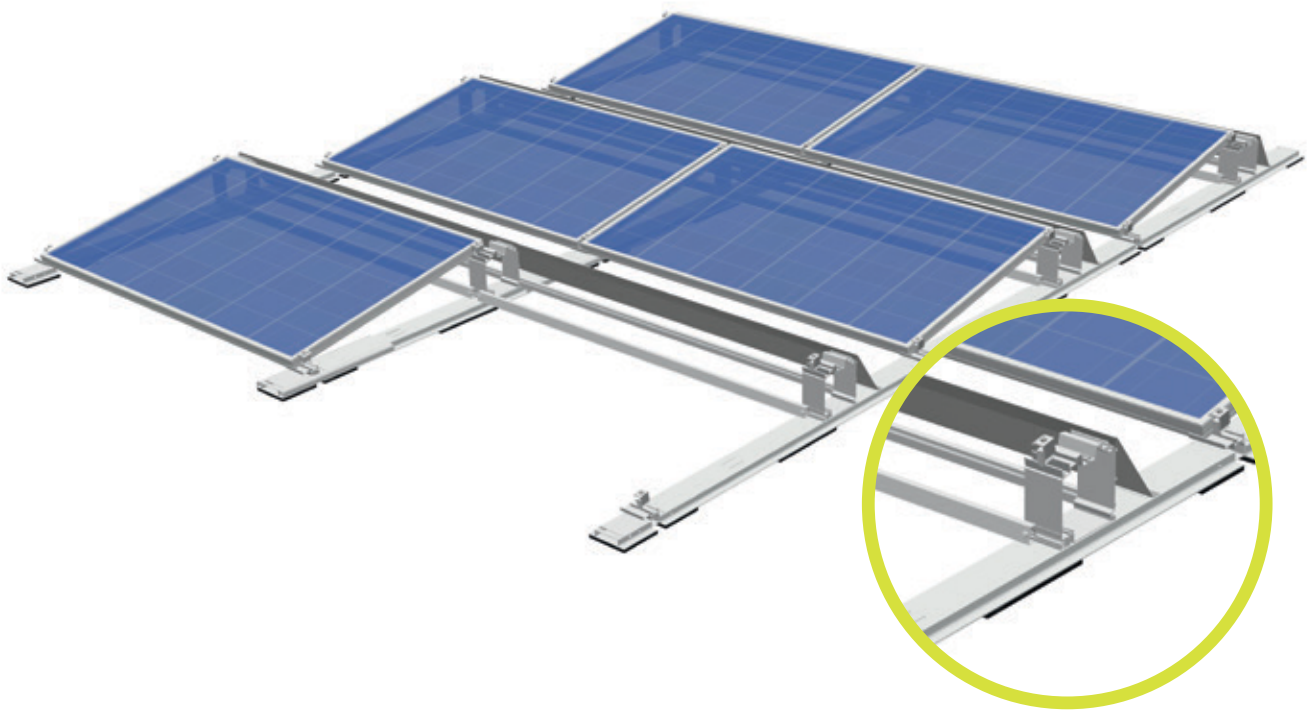
Advantages:

- Free choice of size and position of the module array possible
- Perfect also for small systems of 1, 2, 4 or 8 modules
- Triangles are shipped folded up for less freight and storage costs

Note:

Load bearing reserve of the roof has to be checked prior to installation

Other angles available upon request



LEICHTmount RAIL S
Base



End clamp EH AK II Klick 30-50 A



Mid-clamp MH AK II Klick 30-50 A

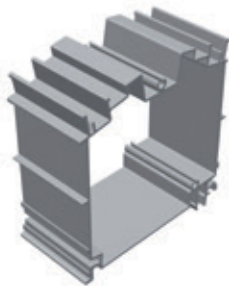
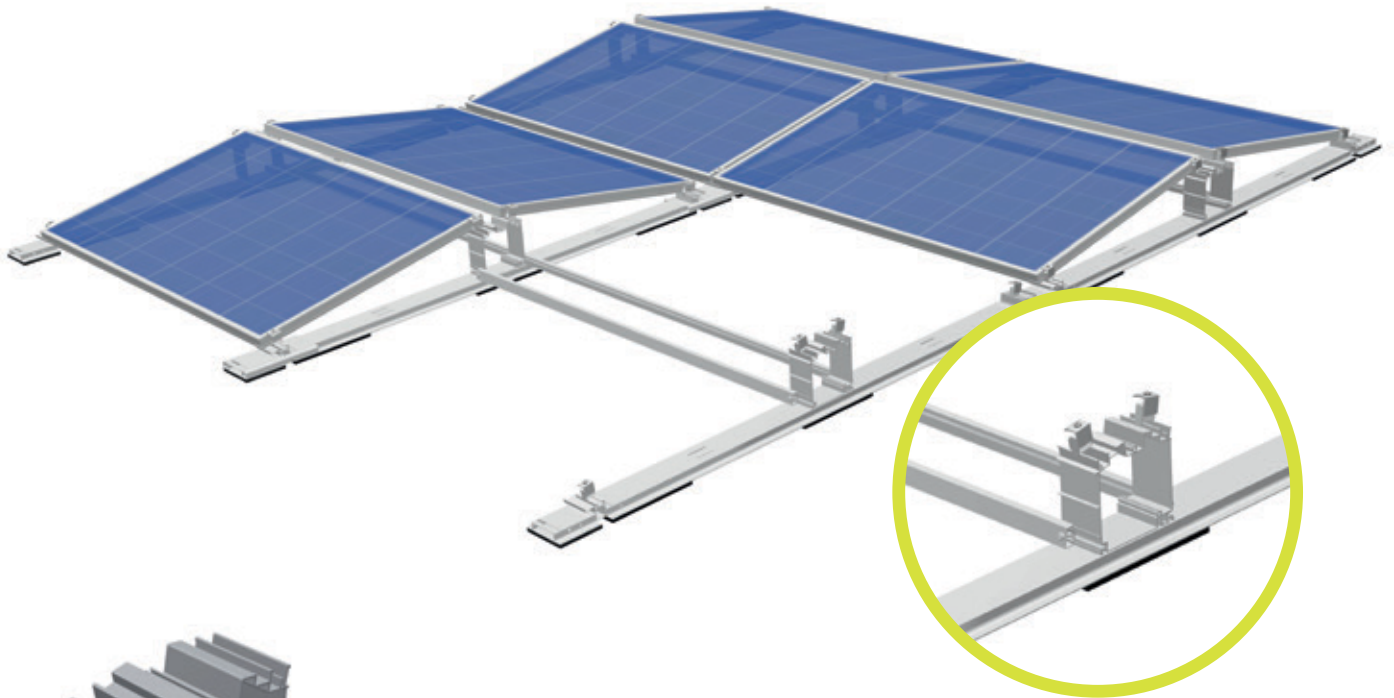


LEICHTmount RAIL S
Ground Rail 1460

LEICHTmount RAIL S

- Application:** Flat roof with foil, bitumen, gravel, green roof, metal, concrete, open spaces
- Module orientation:** South
- Inclination:** 10° / 15°
- Module Size (LxW):** 1630–1680 mm x 980–1020 mm ¹
- Area load:** 4,25 kg/m² (10°) / 4,50 kg/m² (15°)
- Building Height:** 25 m max.
- Roof inclination:** 5° max.
- Edge clearance:** Fitting in the roof edge and corner regions possible
- Wind load:** Up to wind load zone 4
- Snow load:** 2,4 KN/m² (higher values are possible on a project-related basis)
- Min. system size:** 2 rows of 3 modules each / 3 rows of 2 modules each

¹ Other module sizes upon request.



**LEICHTmount RAIL EW
Cube**

End clamp EH AK II Klick 30-50 A

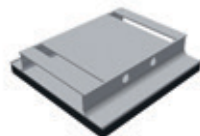


Mid-clamp MH AK II Klick 30-50 A



**LEICHTmount RAIL EW
Ground Rail 1880**

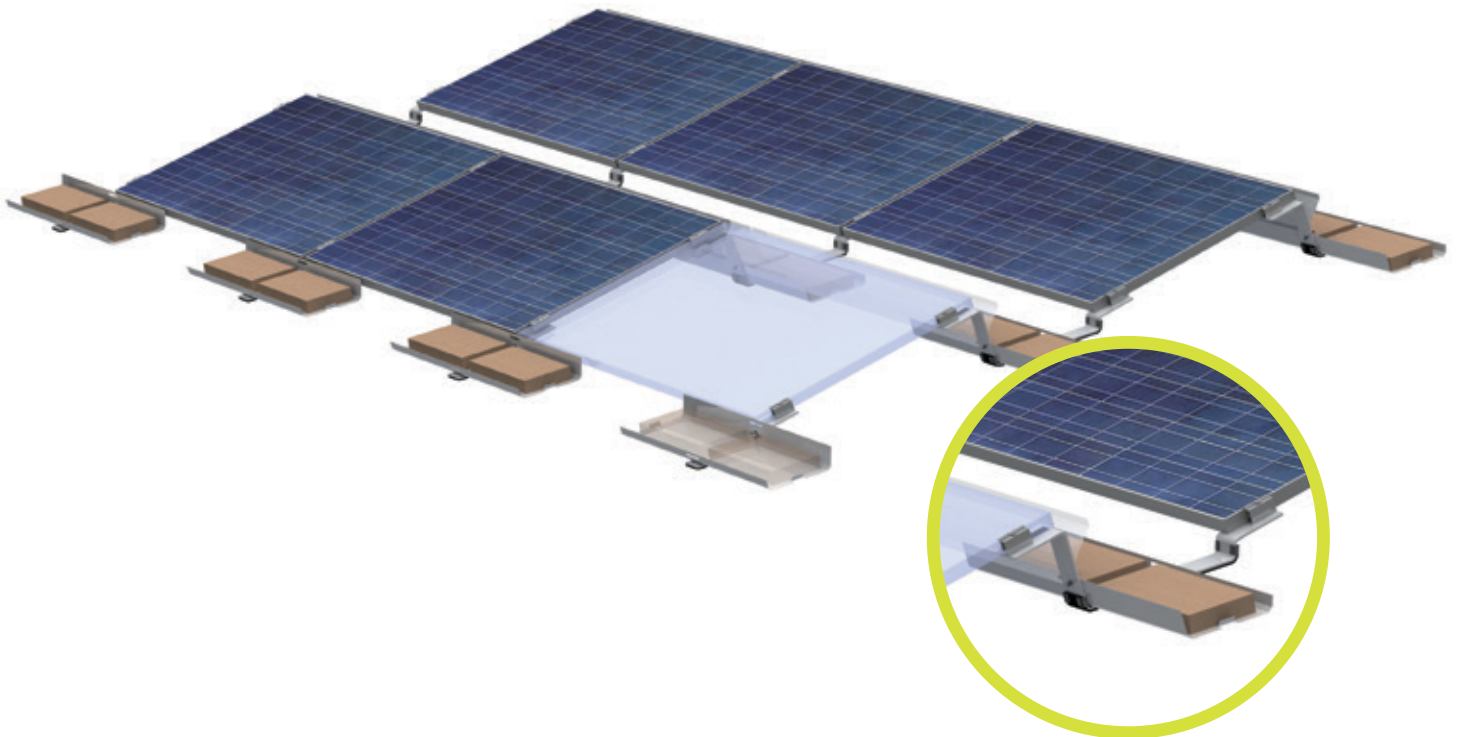
**LEICHTmount RAIL EW
Ground Rail 155**



LEICHTmount RAIL EW

- Application:** Flat roof with foil, bitumen, gravel, green roof, metal, concrete, open spaces
- Module orientation:** East–West
- Inclination:** 10° / 15°
- Module Size (LxW):** 1630–1680 mm x 980–1020 mm ¹
- Area load:** 2,50 kg/m² (10°) / 2,75 kg/m² (15°)
- Building Height:** 25 m max.
- Roof inclination:** 5° max.
- Edge clearance:** Fitting in the roof edge and corner regions possible
- Wind load:** Up to wind load zone 4
- Snow load:** 2,4 KN/m² (higher values are possible on a project-related basis)
- Min. system size:** 2 rows each with 3 double modules / 3 rows each with 2 double modules

¹ Other module sizes upon request.



**LEICHTmount 2.1 S 10°
Connector**

**Mid-clamp 80mm
with Grounding Pins**

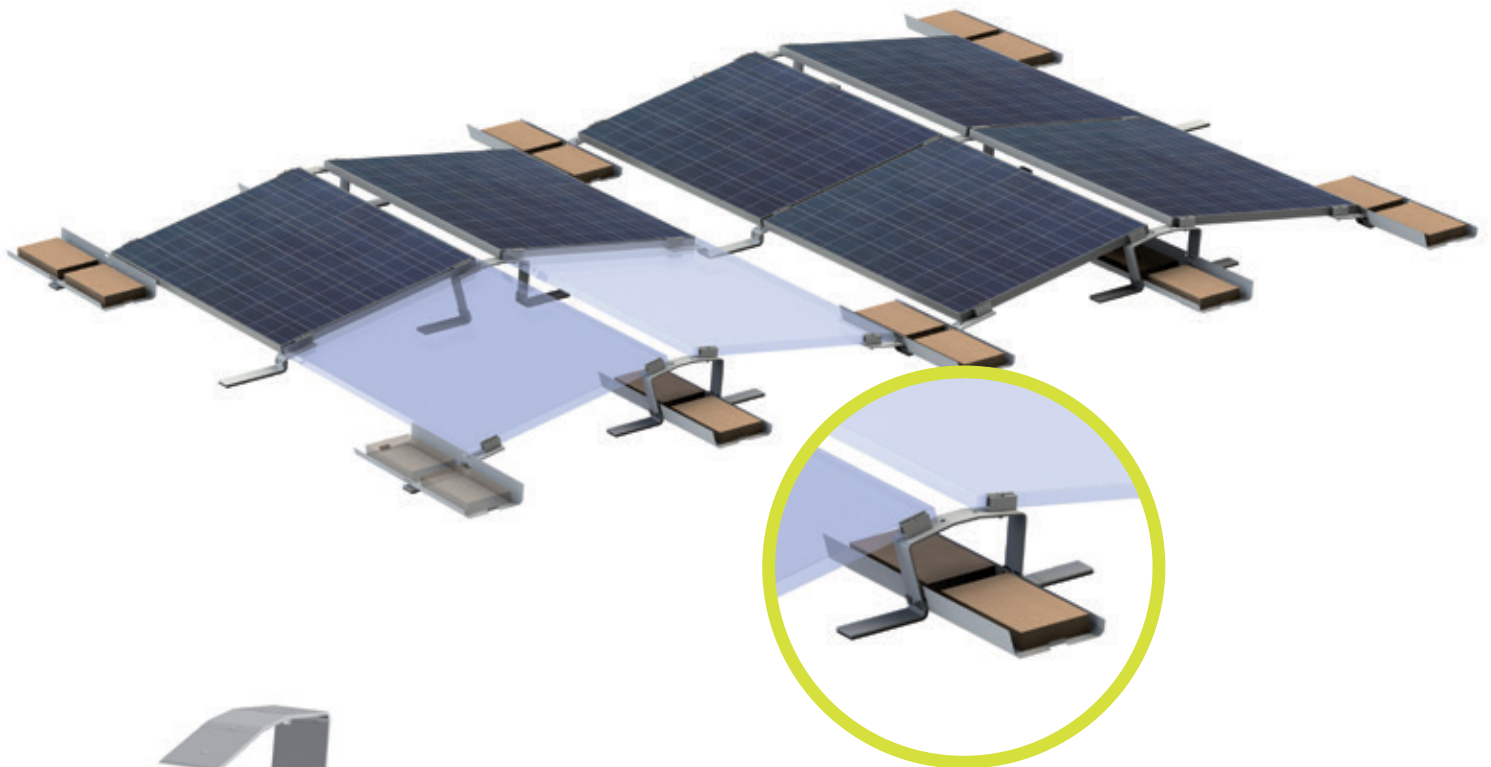


**LEICHTmount 2.1
Ballast Tray 1775**

LEICHTmount 2.1 S

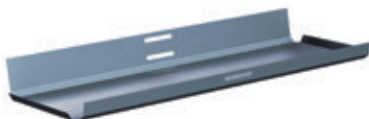
- Module orientation:** South
- Inclination:** 5° / 10° / 15°
- Shading calculation area:** Inclination 5° : 18°
Inclination 10°/15° : 18° or 25°
- Module size (LxW):** 1559–1982 mm x 950–1050 mm ¹
- Area load :** ~ 10 kg/m² of installed roof area
- Building height:** 25 m max.
- Roof inclination:** 4° max.
- Edge clearance:** Fitting in the roof edge and corner regions possible
- Wind load:** Up to wind load zone 4
- Snow load:** Standard version up to 2.4 KN/m²
Alpine version up to 4.4 KN/m²
- Min. system size:** 2 rows of 3 modules each /
3 rows of 2 modules each

¹ Other module sizes upon request.



**LEICHTmount 2.1 EW
Top Part**

**Mid-clamp 80mm
with Grounding Pin**



**LEICHTmount 2.1
Ballast Tray 880**

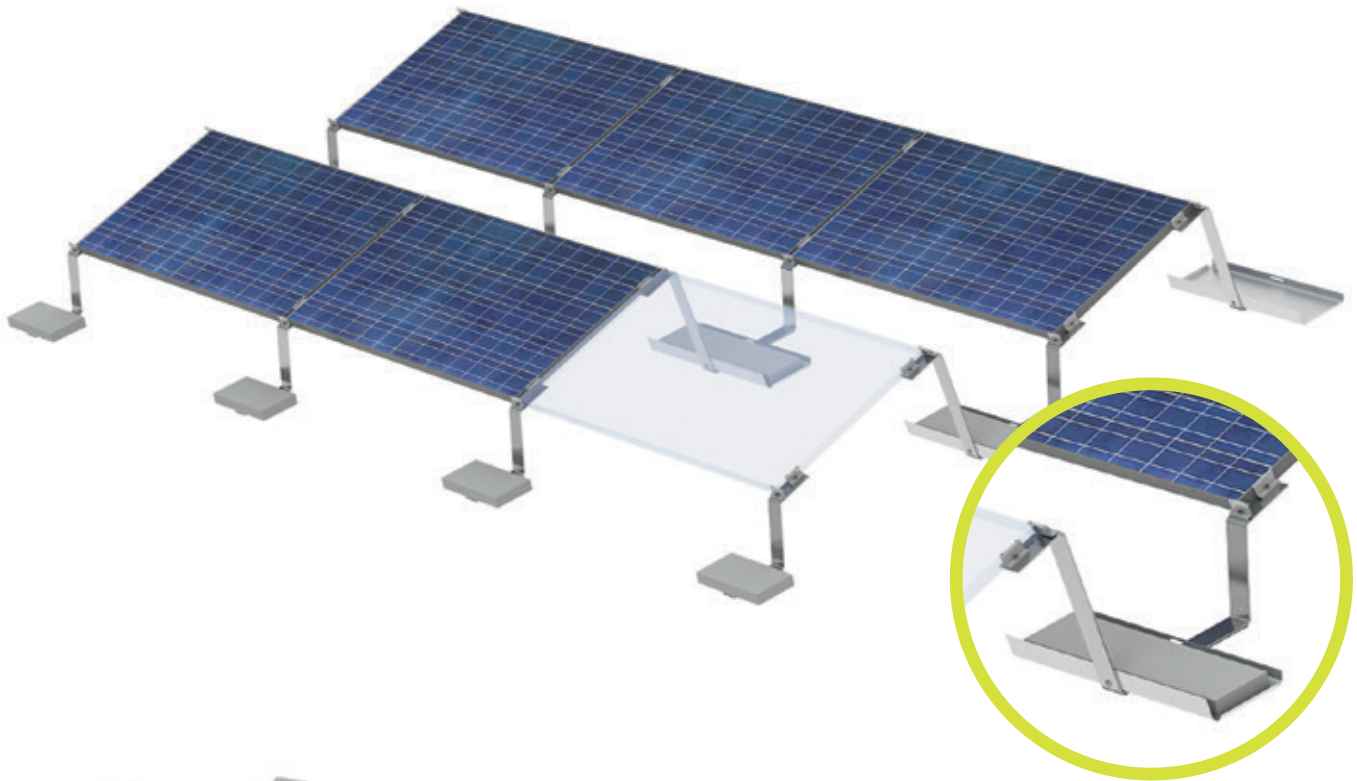
Cable Clip



LEICHTmount 2.1 EW

- Module orientation:** East–West
- Inclination:** 10°
- Shading calculation area:** 18°
- Module size (LxW):** 1559–1982 mm x 950–1050 mm ¹
- Area load :** ~ 15 kg/m² of installed roof area
- Building height:** 25 m max.
- Roof inclination:** 4° max.
- Edge clearance:** Fitting in the roof edge and corner regions possible
- Wind load:** up to wind load zone 4
- Snow load:** Standard version up to 2.4 KN/m²
Alpine version up to 4.4 KN/m²
- Min. system size:** 2 rows of 2 module pairs each

¹ Other module sizes upon request.



**LEICHTmount
Ground Mount S
Connector**

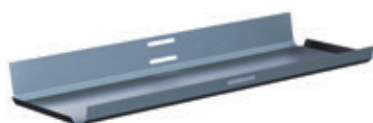


**LEICHTmount Ground Mount S
Front Part**



**LEICHTmount Ground Mount S
End Part**

**LEICHTmount 2.1
Ballast Tray 880**



Application:

Ground Mount System

Module tilt:

15° / 20°

Wind / Snow load:

Up to 2.4 kN/m²

Module size (LxW):

1552–2080 mm x 950–1050 mm

Max. ground slope:

20°

Max. array size:

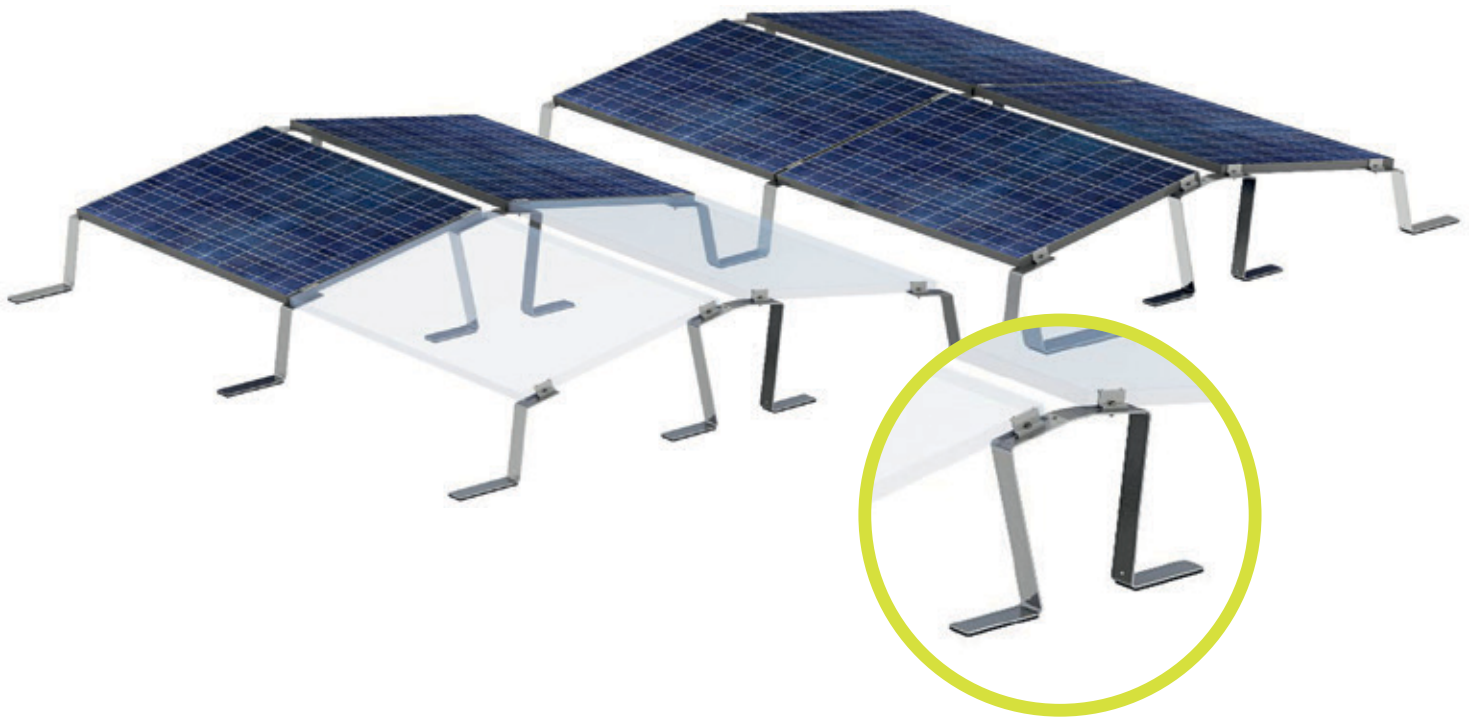
12 x 20 rows, 240 modules

Materials:

Supporting materials made of aluminium EN AW 6060 T64,
module clamps made of aluminium EN AW 6063 T66

Small parts:

Stainless steel X5CrNi18-10 A2-70A



**LEICHTmount
Ground Mount EW
Top Part**

**LEICHTmount Ground Mount EW
Front Part**



**Mid-clamp 80mm
with Grounding Pins**

Application:

Ground Mount System

Module tilt:

10°

Wind / Snow load:

Up to 2.4 kN/m²

Module size (LxW):

1552–2080 mm x 950–1050 mm

Max. ground slope:

20°

Max. array size:

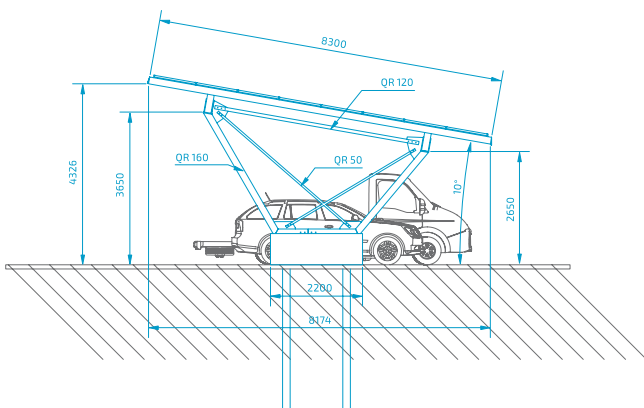
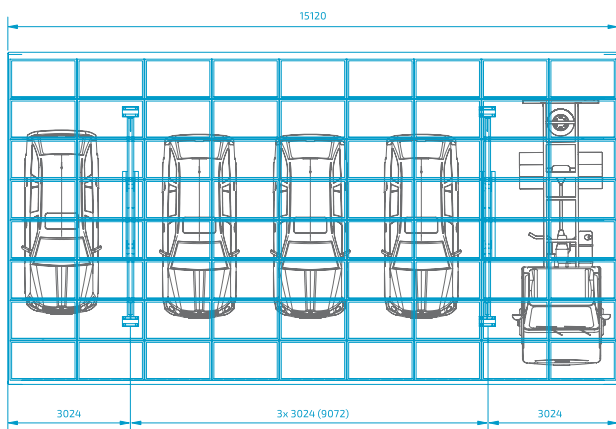
12 x 20 rows, 240 modules

Materials:

Supporting materials made of aluminium EN AW 6060 T64,
module clamps made of aluminium EN AW 6063 T66

Small parts:

Stainless steel X5CrNi18-10 A2-70A



Parking spaces:

5 cars, customised parking space width

Roof measurements:

8.30 m x 15.12 m

Roof area:

125,5 m²

Roof pitch:

10°

Number and positioning of modules:

72 modules – 9 horizontal, 8 rows

Entrance height:

2,65 m / 3,35 m (1 base / 2 bases)

Collision protection:

10 kN for car weighing up to 3 tons

Material:

Galvanised steel

Roofing material:

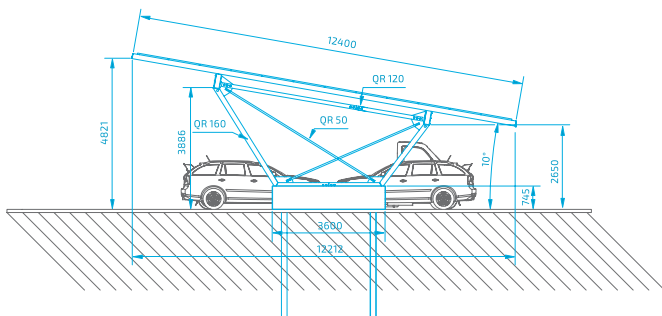
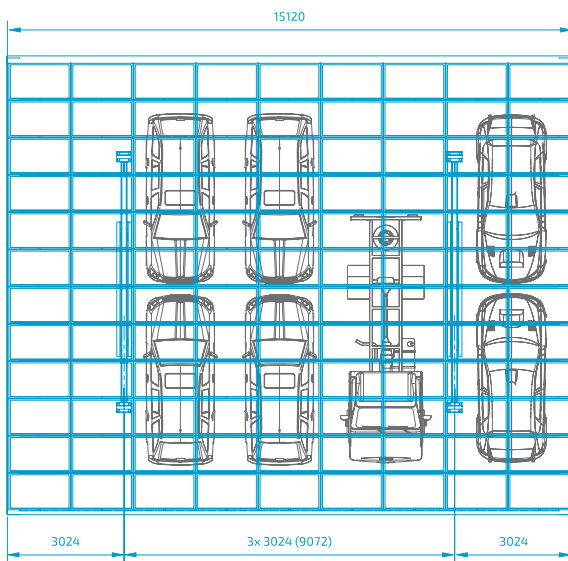
Structural trapezoidal steel sheet

Cable routing:

Integrated

Verified static data:

DIN EN 1991 Eurocode 1, DIN EN 1992 Eurocode 2, DIN EN 1993 Eurocode 3, DIN EN 1995 Eurocode 5, DIN EN 1997 Eurocode 7



Parking spaces:

10 cars, customised parking space width

Roof measurements:

12.40 m x 15.12 m

Roof area:

187,5 m²

Roof pitch:

10°

Number and positioning of modules:

108 modules – 9 horizontal, 12 rows

Entrance height:

2,65 m / 3,35 m (1 base / 2 bases)

Collision protection:

10 kN for car weighing up to 3 tons

Material:

Galvanised steel

Roofing material:

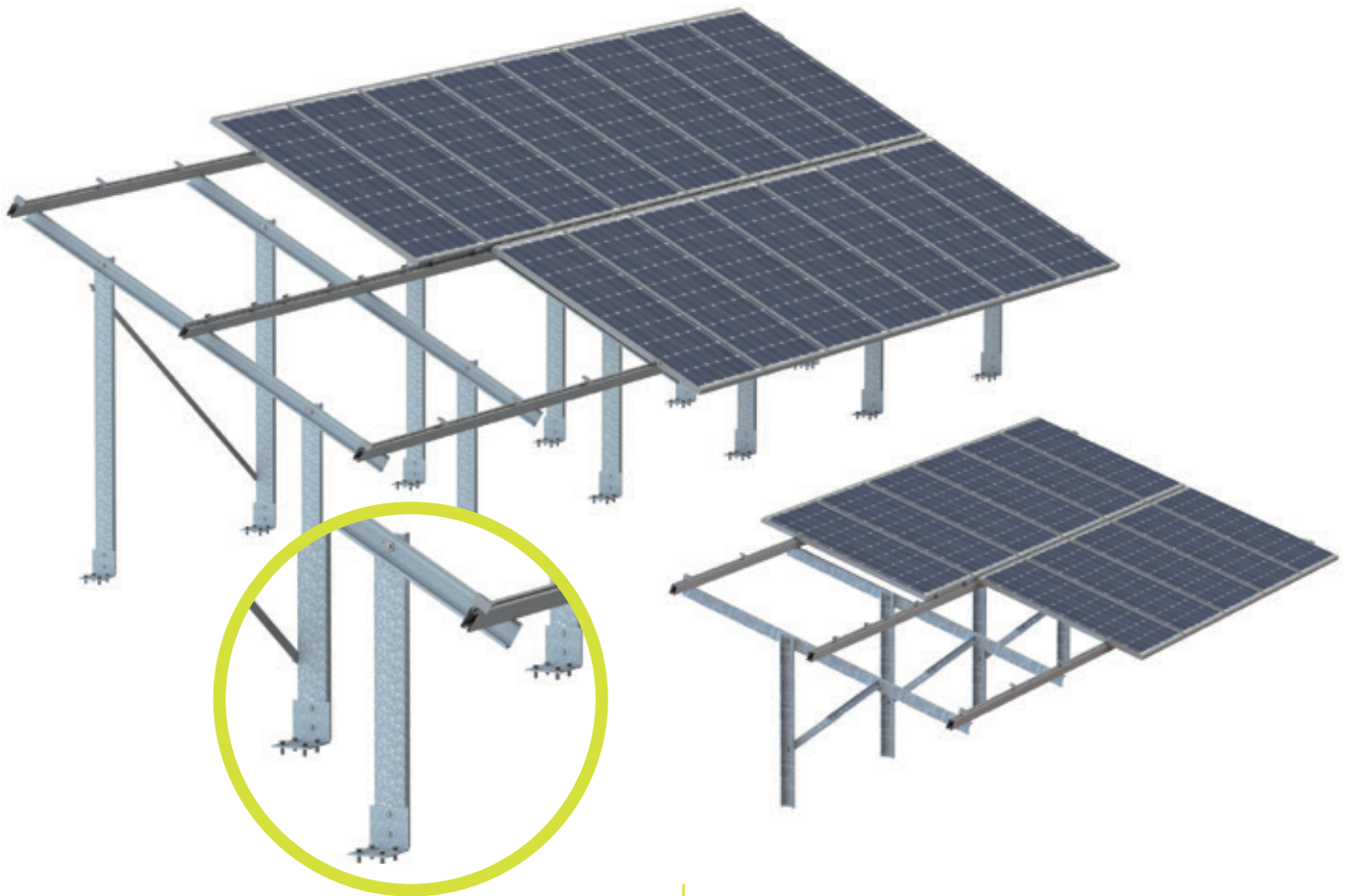
Structural trapezoidal steel sheet

Cable routing:

Integrated

Verified static data:

DIN EN 1991 Eurocode 1, DIN EN 1992 Eurocode 2, DIN EN 1993 Eurocode 3, DIN EN 1995 Eurocode 5, DIN EN 1997 Eurocode 7



Middle profile

Post bracket
concrete foundation



C-Profile post

Application:

Ground mount

Wind/snow load:

Up to snow load zone 3 / up to wind load zone 4

Module type:

Framed and frameless modules

Module orientation:

Vertical/horizontal

Pitch:

0° – 60° in north-south direction

Pitches beyond 60° are possible on request

Terrain slope:

Max. 6° in east-west direction in standard construction /

max. 50° with suitable constructive measures

Module field size:

Variable: max. 3 rows of modules with vertical module assembly / max. 6 rows of modules with horizontal assembly

Foundation:

- Rammed foundation
- Bolted foundation
- Concrete foundation



Kit configurations:

Basic set 2 x 2 modules, Extension sets 1 x 2 modules each, flexibly extendable

Application:

Ground mount, off-grid and on-grid systems

Wind / snow load:

Up to snow load zone 2 / up to wind load zone 2

Module type:

Framed modules

Module orientation:

Vertical

Construction:

Elevated or parallel to the ground

Pitch:

20°, 25° and 30° – individually selectable

Terrain slope:

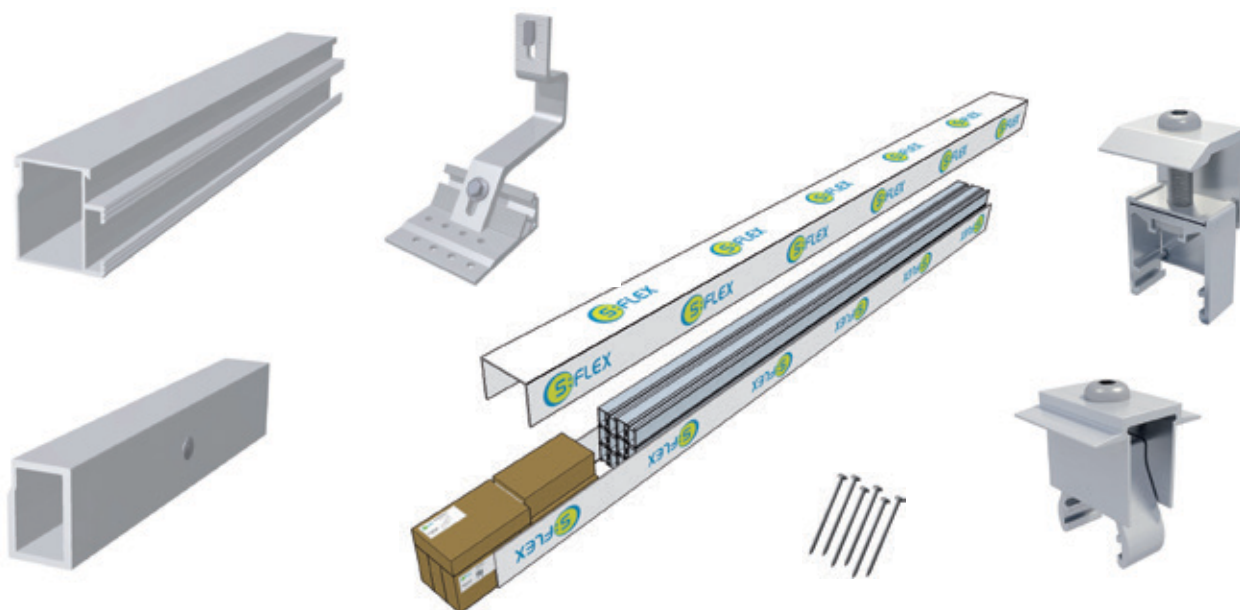
Max. 3° in east-west direction in standard construction / max. 50° with suitable constructive measures

Module field size:

2 modules vertically

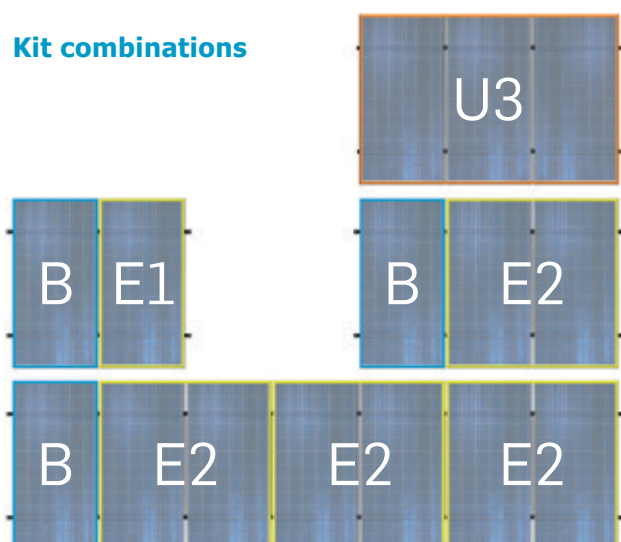
Foundation:

Rammed foundation, Concrete foundation



Set	Rails	Covering caps	Splice	Roof hook	Mid clamp	End clamp	Wood screws
Basic 1 module	2	4		4		4	12
Extension 1 module	2		2	3	2		9
Extension 2 modules	4		4	6	4		18
Universal 3 modules	2	4	2	10	6	4	30

Kit combinations



Application:

Roof mounted / pitched roofs

Roofing type:

Tiles, optionally also available for plain tile, slate tile and sheet metal roofing

Module type:

Framed modules

Module orientation:

Vertical, optionally also available for horizontal installation

Standards:

Eurocode, TÜV, CE, MCS, technical approval

S:FLEX GmbH Hamburg

Reinbeker Weg 9
21029 Hamburg
Germany
Tel. +49-(0)40-18 15 46 13
Fax +49-(0)40-18 15 46 14
info@sflex.com
www.sflex.com

S:FLEX Nederland b.v.

Gasthuislaan 2.11
8331 MX STEENWIJK
Netherlands
Tel. +31-(0)521 34 40 29
nederland@sflex.com
www.sflex.com

S:FLEX Inc. USA

6565 S. Dayton St. – Suite 3650
Greenwood Village, CO 80111
USA
Phone +1 (303) 522 3974
Fax +1 (720) 292 1858
inquiry@sflex.com
www.sflex.com

S:FLEX GmbH Freiburg

Sasbacher Straße 7
79111 Freiburg
Germany
Tel. +49-(0)761 888 56 08 0
Fax +49-(0)761 888 56 08 39
info@sflex.com
www.sflex.com

S:FLEX España/Portugal

C/ Alcubierre, 7
08207 Sabadell / Barcelona
Spain
Tel. +34-627 432 559
info@sflex.com
www.sflex.com

S:FLEX Middle East

P.O. Box 109
11947 Amman
Jordan
Phone +962-(0)7999 47528
akh@sflex.com
www.sflex.com

S:FLEX Mounting Systems UK

Unit 5, Skypark International
Blenheim Way
Liverpool L24 1YH
United Kingdom
Phone +44-845 519 8794
info-uk@sflex.com
www.sflex.com

S:FLEX France

ReSys AlterEco/partenaire S:FLEX
16, Grand ´Rue
67420 Saâles
France
Tél. +33-388 97 17 07
Fax +33-966 80 35 23
info@sflex.com
www.sflex.com

S:FLEX Southern Africa

37 Buckingham Road
3610 Kloof (Durban)
South Africa
Phone +27-31 764 1940
Fax +27-76 765 4416
info-sa@sflex.com
www.sflex.com

S:FLEX South-East Europe

Hungary
Mobil +36-30 268 9974
balazs.szendro@sflex.com
www.sflex.com

