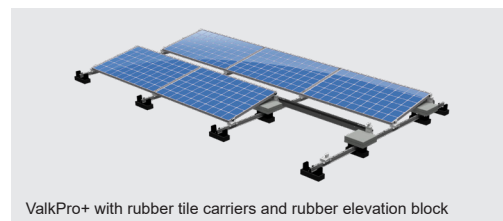


ValkPro+ with rubber tile carriers and rubber load carriers









ValkPro+ with rubber tile carriers and rubber elevation block

Datasheet Rubber components

Technical specifications

Specifications rubber	
Material composition	Recycled rubber bounded by polyurethane
Long term thermal stability	-40°C ... +80°C
Short term thermal stability	up to +110°C
Fire class	Efl, E (according to EN 13501-1+A1:2010)
Dimensional stability	Max. 1.5% - depending on temperature changes
Color retention	Colour may fade slightly overtime due to exposure to UV light
Chemical resistance	Resistant to weak acids and lyes. Conditionally resistant to oils.

Dimensions

Rubber tile carriers				Underlay (loose) for PVC roofs	
Art. no.	Sizes mm	Application		Art. no.	Sizes mm
729622	250 x 75 x 90	Rubber tile carrier ValkPro+		729613	250 x 75 mm
729623	250 x 75 x 90	Rubber tile carrier ValkPro+ for PVC roofs			Standard equipped with protective layer
729627	290 x 115 x 65	Rubber elevation block gravel roof ValkPro+		729607	310 x 135 mm
729630	300 x 150 x 30	Rubber load distributor ValkPro+			
729631	300 x 150 x 30	Rubber load distributor ValkPro+ for PVC roofs			Standard equipped with protective layer
729650	250 x 250 x 39	ValkBox3		729612	250 x 250 mm

Application

- Rubber components can be applied on bitumen, TPO, FPO en EPDM roof membranes. For PVC roof membrane it is recommended to apply an additional protective layer / underlay. This prevents eventual migration of softeners from the PVC into the rubber component overtime.

Colour

- **Black** note: the rubber components are made from recycled rubber granules, which may cause slight colour differences.

Density

- 800 kg/m³

CONTACT DETAILS | DEVELOPER AND PRODUCER OF SOLAR MOUNTING SYSTEMS

Van der Valk Solar Systems + International

Westernessse 18 - 2635 BG Den Hoorn, The Netherlands
 +31 174 25 49 99
 sales@valksolarsystems.com

Valk Solar Systems UK + IE

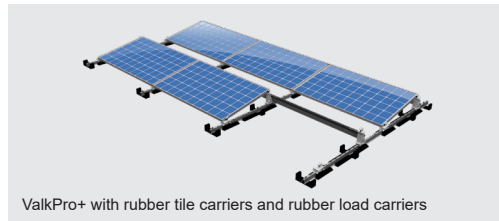
+44 1304 89 76 58
 sales@valksolarsystems.co.uk

Valk Solar Systems Ibérica

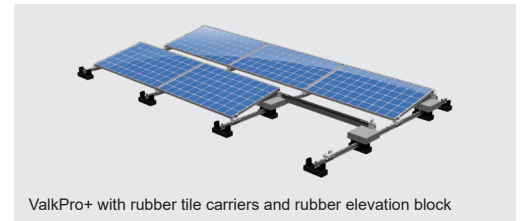
+34 699 326 544
 ventas@valksolarsystems.es

Valk Solar Systems Nordics

+46 7 24 41 60 82
 sales@valksolarsystems.se



ValkPro+ with rubber tile carriers and rubber load carriers



ValkPro+ with rubber tile carriers and rubber elevation block

Datasheet Rubber components

- Fire class**
 - Efl to EN 13501
- Smoke class**
 - S2
- Dimensional tolerances**
 - Length and width: +/- 2%, thickness: +/- 5%
- Carbon black**
 - Carbon black is a black colouring ingredient present in the rubber components and can come out under the influence of weather conditions overtime.
- Lime/cement veil**
 - Under the influence of the weather and the lime/cement veil of nearby objects, a white efflorescence can appear on the tiles and mats.
- Recycling**
 - Products are 100% recyclable.
- Insulation value**
 - R_d 0,15 EN13165
 - U 3,13 EN 6946
- Water permeability**
 - 565 mm per hour EN 12616

Protective layer / underlay for PVC roofs

- Technical specifications**
 - Protective layer / underlay to prevent migration of softeners from PVC roof membrane.
 - Synthetic membrane manufactured in TPO modified polyolefin, double colour sand-grey/black, obtained by co-extrusion, reinforced by polyester mesh.
 - The sand grey layer offers a high resistance to weather influences and UV-light. The black layer offers a high punch resistance.
 - TPO has an expected durability of at least 30 years and has a high chemical resistance.

Specification table

Specifications protective layer		
	Material TPO - FLAGON EP/PR	
Thickness	mm	1,04 - 1,144
Weight	kg/m ²	0,99 - 1,09
Tensile strength	N/5 cm	≥ 1100
Elongation to break	%	≥ 15
Tear resistance	N	≥ 300
Resistance to impact	mm	≥ 450
Cold bending	°C	≤ -40
Hydrostatic pressure resistance	6 hours at 0,5 Mpa	Waterproof
Dimensional stability	%	≤ 0,5
Resistance to artificial weathering	UV	no surface cracking
Resistance to static punching	kg	≥ 20

CONTACT DETAILS | DEVELOPER AND PRODUCER OF SOLAR MOUNTING SYSTEMS