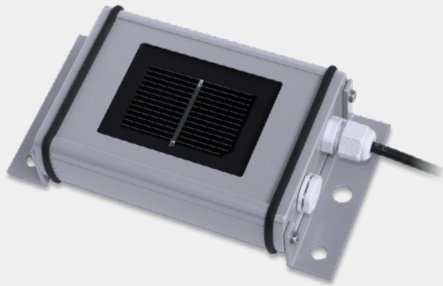
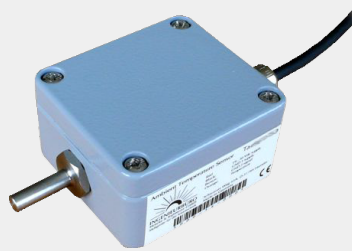


Environmental Sensors

SE1000-SEN-IRR-S1, SE1000-SEN-TAMB-S2
SE1000-SEN-TMOD-S2, SE1000-SEN-WIND-S1



Irradiance sensor



Ambient Temperature sensor



Module Temperature sensor



Wind Velocity sensor

Environmental Monitoring of your SolarEdge System

Connect environmental sensors to the SolarEdge Control and Communication Gateway for monitoring of your site

Used to calculate site performance ratio

Irradiance, temperature and wind measurements

/ Environmental Sensors

SE1000-SEN-IRR-S1, SE1000-SEN-TAMB-S2,
SE1000-SEN-TMOD-S2, SE1000-SEN-WIND-S1

	Irradiance SE1000-SEN-IRR-S1	Ambient Temperature SE1000-SEN-TAMB-S2	Module Temperature SE1000-SEN-TMOD-S2	Wind Velocity SE1000-SEN-WIND-S1	UNIT
OUTPUT					
Electrical output range	0-1.5V	0-10V	4-20mA	4-20mA	
MEASUREMENT					
Range	0-1500 W/m ²	-40 to 90 °C / -40 to 194 °F	-40 to 90 °C / -40 to 194 °F	0-50 m/s	
Accuracy	±5 W/sq.m ±2.5% of measuring value	1% of full scale	1% of full scale	±0.5 m/s or ±3% of measuring value	
INSTALLATION SPECIFICATIONS					
Commercial Gateway (sold separately; SE1000-CCG-G-S1)	Needed				
Dimensions	155 X 85 X 39 / 6.1 X 3.4 X 1.6	64 x 58 x 34 / 2.5 x 2.3 x 1.3	64 x 58 x 34 / 2.5 x 2.3 x 1.3	165 x 105 x 105 / 6.5 x 4.2 x 4.2	mm / in
Weight	350 / 0.77	260/0.57	350/0.77	750 / 1.65	gm / lb
Enclosure type	Powder-coated aluminum	Powder-coated aluminum	Powder-coated aluminum	Housing - Aluminum (AlMgSi1) Cup star - Synthetic, with fibre glass (PC-GF10) Bottom - Synthetic (POM H2320)	
Operating Temperature	-35 to 80 / -31 to 176	-40 to 80 / -40 to 176	-40 to 80 / -40 to 176	0 to 70 / 32 to 155	°C / °F
Protection Rating	IP65	IP67		IP55	

*The warranty and service for the sensors is provided directly by Ingenieurbüro Mencke & Tegtmeyer GmbH; for more details, please see <http://www.imt-solar.com/products.html>