

★ SINCE 1947 ★

**DEKS**

**FLASHINGS**

BY DESIGN



## OUR VISION

Our vision is to provide innovative product solutions by design and delight our customers with operational excellence at every step, ensuring we are their preferred and trusted partner of choice, helping them succeed.

## OUR MISSION

DEKS' customer focus helps our customers find the right 'fit and forget' solution by design to solve their problems. We leverage our global manufacturing capability to design, develop and deliver solution oriented construction products, for the wholesaler, contractor and manufacturer to maximise their success.



# CONTENTS

---

4 - 8

**DEKTITE®**

9 - 12

**SELDEK®**

13 - 15

**SOLARDEK™**

16 - 17

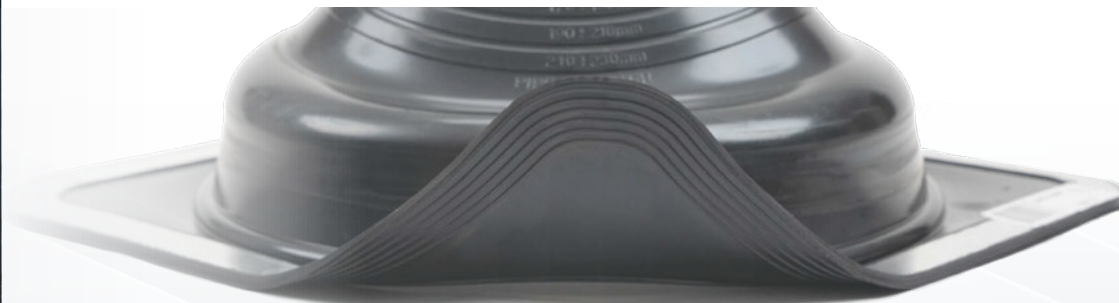
**DEKS Fast Flash® | Perform®**

18 - 21

Complimentary Products |  
Quick Resources |  
Installation Guide

22-23

**SALES TEAM** Contact Details





# DEKTITE®

## RUBBER FLASHINGS MADE HIGHLY VERSATILE

### Flashings for Metal/Glass/Plastic/Fibre Cement Roofs

Used primarily on metal roofs, however, our range of Dektite® Flashings are highly versatile. Perfectly suited for use on all metal, glass, plastic, and fibre cement roofs, no matter the roof profile, the flexible base can be dressed to suit almost any profile. Running around the edge of the

flashing base is an aluminium strip encased in the rubber, allowing the flashing to hold it's grip and provide a secure seal to the roof. In summary, the Dektite® range is capable of flashing almost any penetration.

scan me



#### DID YOU KNOW?

Dektite® flashings can also be used to flash wall penetrations, they work in just the same way as roof penetrations do.

#### NEW IN!

#### THE DEKTITE® SELECTOR

To find out more visit:



#### Highly Versatile

Capable of flashing almost any penetration

#### All Profile Use

Suitable for use on all metal, glass & plastic roofs

#### Secure Seal

The aluminium strip is encased in rubber allowing flashing to hold fast



## DEKTITE® PREMIUM Perfect for Flashing Pipes on Metal Roofs



The multi-application flashing is a highly durable EPDM or silicone, edged with a flexible aluminium band which flashes hot or cold flues and pipes on metal roofs. The square base fits any prepared hole on most roof profiles and material. Fixing kits (FX901 and FX902) are for mechanically fixing DekTite® Flashings to metal roofs. The flashing adhesive should be used for securing the DekTite® to glass or plastic roofs. The chart below shows which fixing kit you need for each DekTite®. DekTite® Premium comes with a flat base and can be easily molded into the profile required.

PIPE EXTERNAL	ROOF PITCH	BASE SIZE	CODE			FIXING KIT
			BLACK EPDM	GREY EPDM	RED SILICONE	
0 - 35mm	0 - 45°	100 x 100mm	DFE100B	DFE100G	DFE200RE	FX901 x 1
5 - 55mm	0 - 45°	139 x 139mm	DFE101B	DFE101G	DFE201RE	FX901 x 1
5 - 76mm	0 - 45°	178 x 178mm	DFE102B	DFE102G	DFE202RE	FX901 x 1
5 - 127mm	0 - 45°	221 x 221mm	DFE103B	DFE103G	DFE203RE	FX901 x 1
75 - 175mm	0 - 45°	280 x 280mm	DFE104B	DFE104G	DFE204RE	FX902 x 1
100 - 200mm	0 - 45°	310 x 310mm	DFE105B	DFE105G	DFE205RE	FX902 x 1
125 - 230mm	0 - 45°	363 x 363mm	DFE106B	DFE106G	DFE206RE	FX902 x 1
150 - 300mm	0 - 45°	456 x 456mm	DFE107B	DFE107G	DFE207RE	FX902 x 1
170 - 355mm	0 - 45°	496 x 496mm	DFE108B	DFE108G	DFE208RE	FX902 x 1
230 - 508mm	0 - 45°	681 x 681mm	DFE109B	DFE109G	DFE209RE	FX902 x 2
EPDM	EPDM	EPDM will withstand constant temperatures at the roofline of -50°C to 115°C and up to 150°C intermittently				
RED SILICONE		Silicone will withstand constant temperatures at the roofline of -50°C to 200°C and up to 250°C intermittently				

## DEKTITE® EZi-SEAL™ Forget the Silicone - Just Screw it Down



Features a revolutionary non-absorbant and non-porous sponge gasket that seals by compression, even in wet conditions; it hugs the roof line to provide a watertight seal without the need for silicone sealants.

PIPE EXTERNAL	ROOF PITCH	BASE SIZE	CODE	FIXING KIT	
			BLACK EPDM		
0 - 35mm	0 - 45°	100 x 100mm	DFE100BEZ	FX901 x 1	
5 - 55mm	0 - 45°	139 x 139mm	DFE101BEZ	FX901 x 1	
5 - 76mm	0 - 45°	178 x 178mm	DFE102BEZ	FX901 x 1	
5 - 127mm	0 - 45°	221 x 221mm	DFE103BEZ	FX901 x 1	
75 - 175mm	0 - 45°	280 x 280mm	DFE104BEZ	FX902 x 1	
100 - 200mm	0 - 45°	310 x 310mm	DFE105BEZ	FX902 x 1	
125 - 230mm	0 - 45°	363 x 363mm	DFE106BEZ	FX902 x 1	
150 - 300mm	0 - 45°	456 x 456mm	DFE107BEZ	FX902 x 1	
170 - 355mm	0 - 45°	496 x 496mm	DFE108BEZ	FX902 x 1	
230 - 508mm	0 - 45°	681 x 681mm	DFE109BEZ	FX902 x 2	
BLACK EPDM	EPDM will withstand constant temperatures at the roofline of -50°C to 115°C and up to 150°C intermittently				



## DEKTITE® COMBO Flash Over or Around

This is the swiss army knife of roof flashing - two flashings in one, use as standard Dektite®, or when retrofit is required, cut and fit around pipe and join with the clips supplied.

PIPE EXTERNAL	ROOF PITCH	BASE SIZE	CODE			FIXING KIT
			BLACK EPDM	GREY EPDM	RED SILICONE	
5 - 60mm	0 - 40°	139 x 139mm	DC101BC	DC101GC	DC201REC	FX901
45 - 85mm	0 - 40°	177 x 177mm	DC102BC	DC102GC	DC202REC	FX901
5 - 127mm	0 - 40°	218 x 218mm	DC103BC	DC103GC	DC203REC	FX901
75 - 175mm	0 - 40°	285 x 285mm	DC104BC	DC104GC	DC204REC	FX901
108 - 190mm	0 - 40°	365 x 365mm	DC105BC	DC105GC	DC205REC	FX902
125 - 230mm	0 - 40°	365 x 365mm	DC106BC	DC106GC	DC206REC	FX902
150 - 280mm	0 - 40°	454 x 454mm	DC107BC	DC107GC	DC207REC	FX902
175 - 330mm	0 - 40°	454 x 454mm	DC108BC	DC108GC	DC208REC	FX902
240 - 508mm	0 - 40°	685 x 685mm	DC109BC	DC109GC	DC209REC	FX902
350 - 760mm	* See Below	1000 x 1045mm	DC110BC	-	DC210REC	FX902

**EPDM** EPDM will withstand constant temperatures at the roofline of -50°C to 115°C and up to 150°C intermittently

**RED SILICONE** Silicone will withstand constant temperatures at the roofline of -50°C to 200°C and up to 250°C intermittently

\* 350-500mm cut - the roof pitch is 30° maximum \* 500-760mm cut - the roof pitch is 5° maximum



## DEKTITE® DIVERTER For High/Low Roof Pitches

No ponding or damming! The large base of the Dektite® Diverter dramatically reduces and diverts rain water pooling, which can occur on very low or high pitched roofs and deep-ribbed roofing profiles.

PIPE EXTERNAL	ROOF PITCH	BASE SIZE	CODE		FIXING KIT
			GREY EPDM	RED SILICONE	
75 - 155mm	0 - 60°	410 x 360mm	DF602	DF702	FX902 x 1
114 - 254mm	0 - 60°	485 x 460mm	DF603	DF703	FX902 x 1
254 - 406mm	0 - 60°	708 x 635mm	DF605	DF705	FX902 x 1
380 - 610mm	0 - 60°	1006 x 905mm	DF606	DF706	FX902 x 1 & FX902 x 2
235 - 425mm	0 - 40°	750 x 660mm	RFS4	-	FX902 x 1

**GREY EPDM** EPDM will withstand constant temperatures at the roofline of -50°C to 115°C and up to 150°C intermittently

**RED SILICONE** Silicone will withstand constant temperatures at the roofline of -50°C to 200°C and up to 250°C intermittently



## DEKTITE® FIXING KITS

Dektite® fixing kits are designed for use with DEKS EPDM and Silicone flashings on metal and fibre cement roofs.

The **FX901 Kit** contains 1 x 75ml tube of low modulus silicone, 25 x self-drilling screws, 25 x colour caps (silver).

The **FX902 Kit** (as shown) contains 3 x 75ml tubes of low modulus silicone, 75 x self-drilling screws, 75 x colour caps (silver).

Self-drilling screws should be placed 25-50mm apart.

PACK	CODE
Fixing Kit 1	FX901
Fixing Kit 2	FX902



## FLASHING ADHESIVE

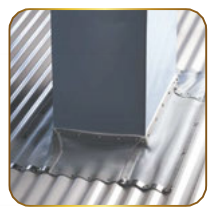
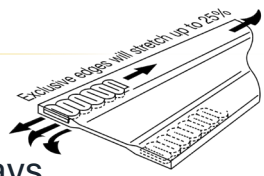
Our flashing adhesive is a one part polymer hybrid engineering-grade adhesive with primerless adhesion to most substrates and is formulated to adhere to Dekтите® EPDM & silicone flashings. The adhesive reacts to atmospheric moisture to produce a long-life polymer hybrid rubber joint that is resistant to UV and will remain permanently flexible.

COLOUR	CODE
Grey	PFA-290G
Black	PFA-290B

AVAILABLE IN



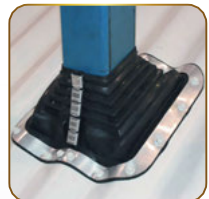
## DEKSTRIP® FLASHING Stretches to any shape, Seals and Stays



Dekstrip® is one of the most versatile and expandable lead-free flashings. Utilising a specially formulated rubber polymer, Dekstrip® Flashing is offered in varying widths and roll lengths to suit multiple applications. Used for expansion joints in walls, gutters and is an ideal flashing solution for large round or square penetrations, valleys, chimneys, bull nose roofs and skylights. Flash between different materials. The unique concertina aluminium edge allows it to stretch 25%. The surface is paintable thus making it an ideal roof flashing product for any application.

WIDTH	LENGTH	CODE	FIXING KIT
		GREY TPE	
180mm	23m	DS23-180	FX902 x 2
235mm	10m	DS10-235	FX902 x 1
305mm	10m	DS10-305	FX902 x 1
450mm	15m	DS15-450	FX902 x 1
235mm	3m	DS3-235	FX902 x 1

## DEK TITE® COMBO SQUARE Designed for Square Penetrations



Specifically designed for square penetrations from 20mm - 125mm. Suitable for standard or retrofit applications. Clips are included.

PIPE EXTERNAL	ROOF PITCH	BASE SIZE	CODE	FIXING KIT
			BLACK EPDM	
20 - 125mm	0 - 40°	222 x 222mm	DCS103BC	FX901

**BLACK EPDM** EPDM will withstand constant temperatures at the roofline of -50°C to 115°C and up to 150°C intermittently

## FLATSEAL™ - EPDM

### Ideal for most flat and low-pitched roof applications

Designed to provide a strong bond with a snap tight seal around the surface of a smooth walled pipe, no clamp bands required. Choose to bond it yourself (FS25 -175) or use the FS25-175BUE for a self-adhesive seal. When a pipe flashing is needed for sealing a penetration through a flat roof, the Dektite®

FlatSeal™ is the perfect solution. Catering for pipe diameters from 25mm to 175mm, simply cut the Dektite® to size using the size guide moulded into the flashing cone.



## FLATSEAL™

### Ideal for flat and low pitch roofs

Applications when bonding to EPDM membranes using traditional EPDM to EPDM fixing methods (Primers and Adhesives.)

## FLATSEAL™ BUTYL - Now with - Black Butyl & EPDM cone

### Ideal for flat and low pitch roof applications

Universal applications provide a layer of high strength waterproof self-adhesive which does not harden or crack, simply just peel off the backing paper and bond to virtually all "non-bituminous" membrane or applied surfaces including EPDM.

PIPE EXTERNAL	BASE SIZE (DIAMETER)	CODE
25 - 175mm	345mm	FS25-175
25 - 175mm	345mm	FS25-175BUE
BLACK EPDM	EPDM will withstand constant temperatures at the roofline of -50°C to 115°C and up to 150°C intermittently	



## Available in...

**FLATSEAL™ BUTYL BASE**  
**FLATSEAL™ EPDM BASE**





# SELDEK®

## INSTALLS IN JUST A FLASH

### Flashings and Weathering Slates for Tile and Slate Roofs

Widely used in place of or an alternative to traditional lead slate flashings. Our range of Seldek® and Rapid Flash™ tile and slate flashings offer a snappy watertight seal to ensure every roof penetration is 100% watertight and worry free. No storm collars are needed when using a Seldek® or Rapid Flash™ product.

All Seldek® and Rapid Flash™ products feature the same well-designed cone as the Dektite® range of products, with the additional or an aluminium, Nu-Lead® or a flexible adhesive polymer (Lead-free) base, which easily dresses over tiles and slates. Often used as soil pipe flashings, stove pipe flashings and vent pipe flashings for tile roofs.



**Storm Collars**  
Are not needed when using Seldek® or Rapid Flash products

**Seldek® & Rapid Flash**  
Have the same well-designed cone

**Snappy Watertight Seal**  
100% Watertight

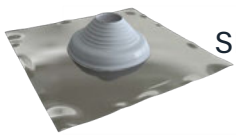




## SELDEK® ALUMINIUM Installs in a flash on Tile or Slate Roofs

The Seldek® Aluminium won't stain or corrode roofs and gutters as Lead can. The EPDM cone, which is trimmed on site to fit, is ingeniously locked to a high grade and malleable aluminium base. This is the fastest economical way to flash a tile roof. Seldek® Aluminium can be painted.

PIPE EXTERNAL	ROOF PITCH	BASE SIZE	BASE TYPE	CODE
				BLACK EPDM
12 - 70mm	0 - 45°	500 x 600mm	Aluminium	SDA100B
50 - 170mm	0 - 45°	500 x 600mm	Aluminium	SDA101B
110 - 200mm	0 - 45°	600 x 600mm	Aluminium	SDA102B
160 - 300mm	0 - 45°	764 x 764mm	Aluminium	SDA103B
300 - 450mm	0 - 45°	956 x 956mm	Aluminium	SDA104B
<b>BLACK EPDM</b>	EPDM will withstand constant temperatures at the roofline of -50°C to 115°C and up to 150°C intermittently			
<b>GREY SILICONE</b>	Silicone will withstand constant temperatures at the roofline of -50°C to 200°C and up to 250°C intermittently			



## SELDEK® ALUMINIUM HIGH TEMPERATURE Installs in a flash on Tile or Slate Roofs

The Seldek® Aluminium won't stain or corrode roofs and gutters as Lead can. The grey silicone cone will withstand constant temperatures at the roofline of 200°C and up to 250°C intermittently.

PIPE EXTERNAL	ROOF PITCH	BASE SIZE	BASE TYPE	CODE
				GREY SILICONE
110 - 200mm	0 - 45°	600 x 600mm	Aluminium	SDA202G
160 - 300mm	0 - 45°	764 x 764mm	Aluminium	SDA203G
<b>BLACK EPDM</b>	EPDM will withstand constant temperatures at the roofline of -50°C to 115°C and up to 150°C intermittently			
<b>GREY SILICONE</b>	Silicone will withstand constant temperatures at the roofline of -50°C to 200°C and up to 250°C intermittently			



## SELDEK® ALUMINIUM PITCHED Installs in a flash on Tile or Slate Roofs

The Seldek® Aluminium won't stain or corrode roofs and gutters as Lead can. The grey silicone cone will withstand constant temperatures at the roofline of 200°C and up to 250°C intermittently.

PIPE EXTERNAL	ROOF PITCH	BASE SIZE	BASE TYPE	CODE
				GREY SILICONE
150 - 280mm	20 - 45°	764 x 764mm	Aluminium	SDAP203G
<b>GREY SILICONE</b>	Silicone will withstand constant temperatures at the roofline of -50°C to 200°C and up to 250°C intermittently			
<b>BLACK EPDM</b>	EPDM will withstand constant temperatures at the roofline of -50°C to 115°C and up to 150°C intermittently			
PIPE EXTERNAL	ROOF PITCH	BASE SIZE	BASE TYPE	CODE
				BLACK EPDM
150 - 280mm	20 - 45°	764 x 764mm	Aluminium	SDAP103B
<b>GREY SILICONE</b>	Silicone will withstand constant temperatures at the roofline of -50°C to 200°C and up to 250°C intermittently			
<b>BLACK EPDM</b>	EPDM will withstand constant temperatures at the roofline of -50°C to 115°C and up to 150°C intermittently			

## SELDEK® NU-LEAD® No more concern for unprotected Lead



Seldek® Nu-Lead® has been developed for use where the handling of lead and associated environmental issues are of concern. It combines a long-life, weather-resistant EPDM cone with a grey-primed acrylic-coated lead base. The unique thermo-baked coating does not affect the Lead's malleability, and prevents leaching onto the roof and into gutters, downpipes and the water table.

PIPE EXTERNAL	ROOF PITCH	BASE SIZE	BASE TYPE	CODE
				BLACK EPDM
12 - 70mm	0 - 45°	490 x 410mm	Nu-Lead	DNL101B
50 - 170mm	0 - 45°	600 x 450mm	Nu-Lead	DNL103B
50 - 170mm	0 - 45°	410 x 490mm	Nu-Lead Nxt Gen	DNLS103B
175 - 330mm	0 - 45°	850 x 550mm	Nu-Lead	DNL108B

**BLACK EPDM** EPDM will withstand constant temperatures at the roofline of -50°C to 115°C and up to 150°C intermittently



## RAPID FLASH™

**Replaces traditional Lead-based flashings and incorporates a cleverly designed mesh that is free from toxic materials.**

The fully adhesive solution has been designed to suit metal, tile, slate, glass and most other roof types, while incorporating a paintable surface that can be adapted to suit different colours.

PIPE EXTERNAL	ROOF PITCH	BASE SIZE	BASE TYPE	CODE
				BLACK EPDM/ GREY BASE
6 - 50mm	0 - 45°	280 x 450mm	Rapid Flash	DRF100GB
5 - 127mm	0 - 45°	370 x 560mm	Rapid Flash	DRF101GB
50 - 70mm	0 - 45°	370 x 560mm	Rapid Flash	DRF102GB
50 - 170mm	0 - 45°	370 x 560mm	Rapid Flash	DRF103GB
175 - 330mm	0 - 45°	560 x 850mm	Rapid Flash	DRF108GB

**BLACK EPDM** EPDM will withstand constant temperatures at the roofline of -50°C to 115°C and up to 150°C intermittently



- Easy to install - minimal tools required
- Reduces installation time by 50% compared to traditional lead-based solutions
- Unique stretchable base that suits all roof profiles
- Comes in five sizes to suit all applications

- Market-leading sealing system that you can trust
- Fully adhesive base
- UV rated
- Lead free



scan me

To watch the Rapid Flash™ installation video

## PERFORM® HAMMER Specially Designed



Specially designed for dressing Rapid Flash™ as well as Deks Fast Flash® Lead free flashing.

CODE	DESCRIPTION	WEIGHT
HAMMER	Perform® Hammer	0.5kg

## NXT GEN WEATHERING SLATES FOR USE WITH SOIL PIPES AND BOILER FLUES



### FULLY WATERPROOFED

Durable, high-quality polymer cone ensures a secure fit to the outer surface of both twin and single wall systems. These items will fit all boiler brands where a roof exit is required. Available in an aluminium, acrylic coated Lead, or Rapid Flash™ Lead Free Flashing base with an EPDM cone.



### A SIZE TO SUIT EVERY APPLICATION

Comes with a large range - cover any boiler flue/soil pipe application with just one product! 0 - 45°.



### SAFE TO USE

Handle either of these great products without safety concerns.



### WON'T STAIN ROOFS OR GUTTERING

No discolouration of flues or slates as Lead does.



### ENVIRONMENTALLY FRIENDLY

No leaching of contaminated water into our waterways as Lead does.



### CAN BE PAINTED TO MATCH ROOF

Use a good acrylic paint (apply a polyester-etched primer first on Seldek® Aluminium).



PIPE EXTERNAL	ROOF PITCH	BASE SIZE	BASE TYPE	CODE
				BLACK EPDM
50 - 170mm	0 - 45°	500 x 600mm	Aluminium	SDA101B
50 - 170mm	0 - 45°	600 x 600mm	Nu-Lead®	DNL103B
50 - 170mm	0 - 45°	410 x 490mm	Nu-Lead Nxt Gen	DNLS103B
50 - 170mm	0 - 45°	370 x 560mm	Rapid Flash™	DRF103GB

**BLACK EPDM** EPDM will withstand constant temperatures at the roofline of -50°C to 115°C and up to 150°C intermittently



# SOLARDEK™

## SOLAR WATERTIGHT MADE A REALITY

### Solar Panel | Cable Roof Flashing | Solar Thermal

The focus on renewable energy has never been so large. The solar panel market lacks a purpose made solution for ensuring watertight solar panel pipe and cable penetrations. Our innovation team have created safe, easy and watertight flashing solutions. Available for both Solar PV and Solar Thermal applications.

EPDM is used for Solar PV/ Cable penetrations. Silicone is used for Solar Thermal applications, ensuring protection against hot pipes whilst blending into the solar panel installation.



scan me

#### Special Flashing

Made for Solar Thermal & PV Installations

#### Ensures

Safe, Easy & Watertight Seals

#### Made for

Tile, Slate & Metal Roofs

DNLS10MB



SDA10MB



## DEKTITE® Multicable Solar Flashings

The speciality flashing for solar PV cables on tile or slate roofs.



- Black EPDM High UV Resistance cone
- Available in Aluminium or Nu-Lead® Base
- Weather Seals and Protects up to 10 Cables
- Purpose-made durable solution to MCS

PIPE EXTERNAL	ROOF PITCH	BASE SIZE	BASE TYPE	CODE
				BLACK EPDM
4 - 8mm	Any	490 x 410mm	Nu-Lead®	DNLS10MB
4 - 8mm	Any	450 x 600mm	Aluminium	SDA10MB

**BLACK EPDM** EPDM will withstand constant temperatures at the roofline of -50°C to 115°C and up to 150°C intermittently

DNLS200MPG



SDAMINI



DNL100B

## SOLARDEK™ Speciality Flashing for Solar Thermal Installations

The purpose-designed SolarDek™ provides the safest, most efficient method of flashing solar thermal pipes and cables on tile and slate roofs. SolarDek™ features the Nu-Lead® base, which will not stain or corrode the roof, together with a long-life Dektite® EPDM or grey silicone cone ideally suited to solar thermal pipe sizes.



- Grey High Temperature Seal
- Complete Weather Proofing
- Safe Protected Nu-Lead® Apron
- Purpose-made Durable Solution to MCS

PIPE EXTERNAL	ROOF PITCH	BASE SIZE	BASE TYPE	CODE
				BLACK EPDM
0 - 35mm	0 - 45°	490 x 410mm	Nu-Lead®	DNL100B
0 - 30mm	0 - 45°	450 x 600mm	Aluminium	SDAMINIB

**BLACK EPDM** EPDM will withstand constant temperatures at the roofline of -50°C to 115°C and up to 150°C intermittently

PIPE EXTERNAL	ROOF PITCH	BASE SIZE	BASE TYPE	CODE
				GREY SILICONE
0 - 35mm x 2	0 - 45°	490 x 410mm	Nu-Lead®	DNLS200MPG

**GREY SILICONE** Silicone will withstand constant temperatures at the roofline of -50°C to 200°C and up to 250°C intermittently



## DEKTITE® PREMIUM SOLAR

### Perfect for Flashing Pipes and Cables on Metal Roofs

The multi-application flashing in a highly durable EPDM or silicone, edged with a flexible aluminium band, flashes pipes and cables on metal roofs. The square base fits most roof profiles.



Dektite® Premium  
DFE 100/200



- For solar pipes or up to three cables
- Suits most roof profiles
- Available in black and grey EPDM or red silicone



Dektite® Premium  
DFE 101/201



- Versatile flashing, accommodates up to five penetrations
- Suitable for pipes and/or cables
- High UV resistance



Dektite® Premium Multicable  
DFE101BM



- Protects up to 12 Cables and weatherproofs entry to any metal roof
- Purpose-made durable solution, as required by MCS
- Suits most roof profiles

PIPE EXTERNAL	CABLE EXTERNAL	ROOF PITCH	BASE SIZE	CODE			FIXING KIT
				BLACK EPDM	GREY EPDM	RED SILICONE	
0 - 35mm	4 - 8mm	0 - 45°	100 x 100mm	DFE100BS	DFE100GS	DFE200RES	FX901
5 - 55mm	4 - 8mm	0 - 45°	139 x 139mm	DFE101BS	DFE101GS	DFE201RES	FX901
N/A	4 - 8mm	Any	139 x 139mm	DFE101BM	N/A	N/A	FX901
EPDM	EPDM	EPDM will withstand constant temperatures at the roofline of -50°C to 115°C and up to 150°C intermittently					
RED SILICONE	Silicone	Silicone will withstand constant temperatures at the roofline of -50°C to 200°C and up to 250°C intermittently					

## DEKS FAST FLASH® - BBA ACCREDITED

### Self-adhesive and user-friendly Lead replacement material

Fast Flash® is ideal for any application requiring a quick and secure flashing solution.

Fast Flash® can be installed on roofs with a minimum slope of 5° and on almost all roof materials. Fast Flash® is environmentally friendly and easy to install, as the reverse is self-adhesive, as well as being flexible and very workable.

If painting is required or where water is likely to travel from copper or bitumen onto Fast Flash®, use 100% acrylic low sheen exterior paint.



#### • Easy to Install

Light weight, easy to trim and fully self-adhesive

#### • Flexible and Very Workable

Malleable and stretchable. Dresses well to all profiles

#### • Product Range

Rolls in four standard sizes, and colours black, grey and anthracite grey. (Grey colour matches old/worn Lead. Anthracite grey matches new Lead)

#### • Environmentally Friendly

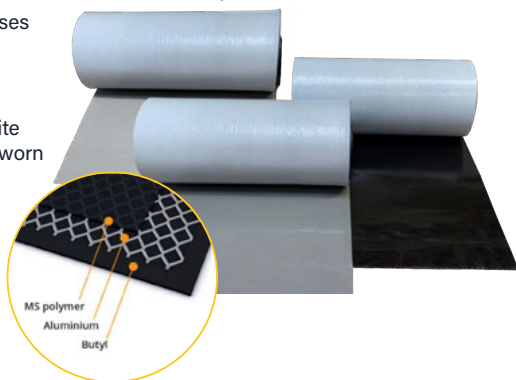
Aluminium stretch mesh cast in polymer rubber

#### • Slower-Set Adhesive

Allows time for repositioning - 20/30 mins

#### • Solutions

Ideal solution for flashing in roof solar panels, around roof lights, abutments and chimney stacks etc.



PRODUCT CODE	DESCRIPTION	WEIGHT
FFR5-140G	140mm x 5m Roll - Grey	2.4kg
FFR5-280G	280mm x 5m Roll - Grey	4.7kg
FFR5-370G	370mm x 5m Roll - Grey	5.9kg
FFR5-560G	560mm x 5m Roll - Grey	9.2kg
FFR5-140B	140mm x 5m Roll - Black	2.4kg
FFR5-280B	280mm x 5m Roll - Black	4.7kg
FFR5-370B	370mm x 5m Roll - Black	5.9kg
FFR5-560B	560mm x 5m Roll - Black	9.2kg
FFR5-140AG	140mm x 5m Roll - Anthracite Grey	2.4kg
FFR5-280AG	280mm x 5m Roll - Anthracite Grey	4.7kg
FFR5-370AG	370mm x 5m Roll - Anthracite Grey	5.9kg
FFR5-560AG	560mm x 5m Roll - Anthracite Grey	9.2kg

### PERFORM® HAMMER Shaping the covering material



For best results when shaping the covering material to suit profiled roofing, use a Perform® Hammer.

CODE	DESCRIPTION	WEIGHT
HAMMER	Perform® Hammer	0.5kg

## DEKS PERFORM® - BBA ACCREDITED

### The perfect replacement for Lead

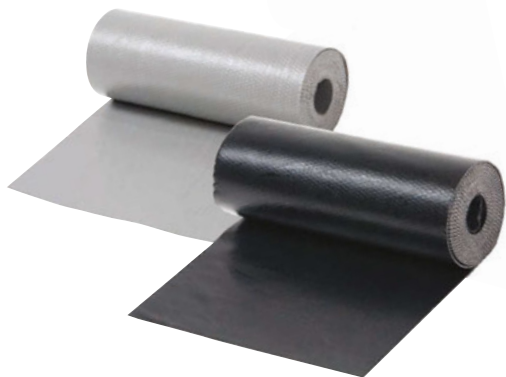
Perform® is a composite consisting of aluminium mesh, embedded in a special type of polymer rubber. Both of these materials are environmentally sound and UV resistant. The material offers the same functionality of Lead, has excellent stretching properties and provides a 'breathable' covering, which prevents the formation of condensation.

Non-toxic and much lighter than Lead, Perform® meets all the demands of today's health and safety regulations.

To match various coloured tiles or slates, specifiers can now choose from four different colours. Grey and black are available in stock. Stretches up to 60% in width and 20% in length.



- No scrap value to potential thieves
- Lightweight and easy to handle
- Great form stability, easily cut and dressed
- Available in two colours from stock
- Use full roll without need for expansion joints
- Perfect for flashing all types of structures, including car ports, conservatories and extensions
- Ideal solution for flashing dormer windows and any other penetrations through traditional roofs
- Great for flashing around traditional chimney stacks on any type of profiled tile or slate roof
- Ideal for valley or box gutters
- Ideal solution for flashing solar panel fixings and around roof lights
- Perform® adhesive works on wet surfaces



PRODUCT CODE	DESCRIPTION	WEIGHT
PFR4-150G	150mm x 4m Roll - Grey	2.3kg
PFR4-250G	250mm x 4m Roll - Grey	4.1kg
PFR4-300G	300mm x 4m - Grey	4.7kg
PFR4-450G	450mm x 4m - Grey	6.7kg
PFR4-600G	600mm x 4m - Grey	8.4kg
PFR4-1250G	1250mm x 4m Roll - Grey	20.5kg
PFR4-150B	150mm x 4m Roll - Black	2.3kg
PFR4-250B	250mm x 4m Roll - Black	4.1kg
PFR4-300B	300mm x 4m - Black	4.7kg
PFR4-450B	450mm x 4m - Black	6.7kg
PFR4-600B	600mm x 4m - Black	8.4kg
PFR4-1250B	1250mm x 4m Roll - Black	20.5kg
PFA-290G	Adhesive - Grey (290ml)	-
HAMMER	Hammer	0.5kg

## COMPLIMENTARY PRODUCTS

- Sealing, protection and repair of flashing on roofs
- Suitable for the treatment of bitumen-based products
- Can cover tears up to 5mm wide
- Waterproof after hardening
- Contains: 1.13kg
- Great emergency roof/gutter fix
- Can be used with Fast Flash® & Perform®



AVAILABLE IN

GREY

BLACK

FLASHSEAL™  
Effective Sealing

FlashSeal™ is used for the sealing, protection and repair of flashing on roofs and is, among other things, well-suited for the treatment of bitumen-based products. FlashSeal™ can cover tears up to 5mm wide, applied in a thickness layer of 1.5mm and is waterproof after hardening.

CODE	DESCRIPTION	WEIGHT
FS1000G	FlashSeal™ - Grey	1.13kg
FS1000B	FlashSeal™ - Black	1.13kg

## DEKTITE® FIXING KITS

Dektite® fixing kits are designed for use with DEKS EPDM and silicone flashings on metal fibre and cement roofs.

The **FX901 Kit** contains 1 x 75ml tube of low modulus silicone, 25 x self-drilling screws, 25 x colour caps (silver).

The **FX902 Kit** (as shown) contains 3 x 75ml tubes of low modulus silicone, 75 x self-drilling screws, 75 x colour caps (silver).

Self-drilling screws should be placed 25-50mm apart.



PACK	CODE
Fixing Kit 1	FX901
Fixing Kit 2	FX902



AVAILABLE IN

GREY

BLACK

## FLASHING ADHESIVE

Our flashing adhesive is a one part polymer hybrid engineering-grade adhesive with primerless adhesion to most substrates and is formulated to adhere to Dektite® EPDM & silicone flashings. The adhesive reacts to atmospheric moisture to produce a long-life polymer hybrid rubber joint that is resistant to UV and will remain permanently flexible.

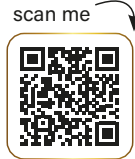
COLOUR	CODE
Grey	PFA-290G
Black	PFA-290B

## QUICK RESOURCES

Commonly requested information with the scan of a QR code



**EPVC Pipe Couplings**  
[www.deks.co.uk/couplings](http://www.deks.co.uk/couplings)



**DEKDRAIN Eeze - B125 & C250 Channel Drain**  
[www.deks.co.uk/eezee](http://www.deks.co.uk/eezee)



**DEKDRAIN Edge - Slot Drain**  
[www.deks.co.uk/edge](http://www.deks.co.uk/edge)



**DEKDRAIN A15 - Domestic Channel Drain**  
[www.deks.co.uk/a15](http://www.deks.co.uk/a15)

## Technical Product Documents



**DEKTITE® PREMIUM**



**DEKTITE® COMBO**



**DEKTITE® SOAKER**



**RAPID FLASH™**



**SELDEK® ALUMINIUM**



**SELDEK® NU-LEAD®**



**FLATSEAL™**



**DEKSTRIP®**



**DRAINAGE**



**PERFORM® FAST FLASH®**

When your account has been opened, one of our sales managers will be in contact to discuss how we can best help your business. ([www.deks.co.uk/open-an-account](http://www.deks.co.uk/open-an-account))



# DEKS Fast Flash® Installation Guide



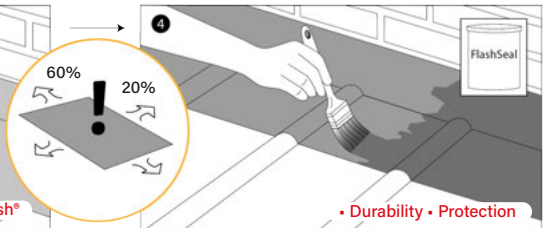
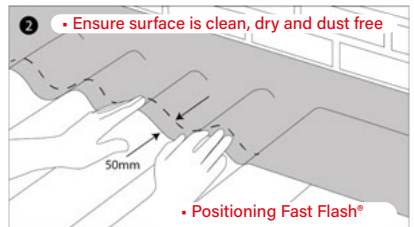
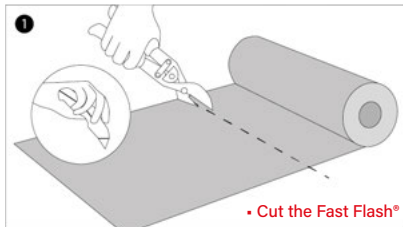
## ACCESSORIES AND TOOLS

Recommended for  
the professional  
roofer.

AVAILABLE IN

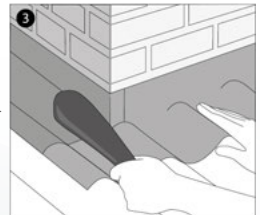


AVAILABLE IN



• ONLY NEEDED IN CERTAIN CIRCUMSTANCES. REFER TO WARRANTY

• Flashing over Brickwork, Chimneys and Abutments



scan me



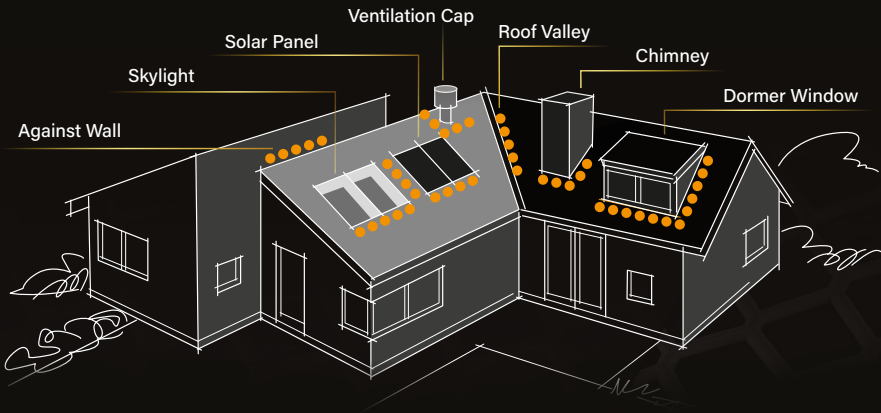
Please refer to  
Fast Flash®  
Warranty Guide.



# Fast Flash®



## Flexible Lead Replacement Roof Flashing



- **Range of Sizes Available**  
From 140mm to 1250mm
- **No Patination Oil Needed**  
Install quicker and reduce cost
- **No Lead Clips Needed**  
Install quicker and reduce cost
- **5m Length Rolls**  
75% The weight of Lead  
- easy to carry

scan me




Discover the rest of the DEKS range





 [sales@deks.co.uk](mailto:sales@deks.co.uk)

 [www.deks.co.uk](http://www.deks.co.uk)

 01275 858 866



DEKS Industries Europe Ltd  
West End Trading Estate  
Blackfriars Road  
Nailsea, Bristol, BS48 4DJ

While every effort has been made to ensure that the details in this brochure are correct at the time of print, we cannot accept responsibility for any errors or omissions.

To find your DEKS contact on a Map please connect to our website with this QR code.



**NORTH ENGLAND  
SCOTLAND & IRELAND**

**Martin Hipkin**

BUSINESS & PRODUCT  
DEVELOPMENT DIRECTOR

[martinh@deks.co.uk](mailto:martinh@deks.co.uk)

07780 446 597

**SOUTH WEST  
& WALES**

**Mark Stewart**

BUSINESS DEVELOPMENT  
DIRECTOR

[marks@deks.co.uk](mailto:marks@deks.co.uk)

07903 389 220

**SOUTH EAST  
& HOME COUNTIES**


**Andy Minas**

BUSINESS DEVELOPMENT  
DIRECTOR


[andym@deks.co.uk](mailto:andym@deks.co.uk)

07534 294 255



 [sales@deks.co.uk](mailto:sales@deks.co.uk)

 [www.deks.co.uk](http://www.deks.co.uk)

 01275 858 866



DEKS Industries Europe Ltd  
West End Trading Estate  
Blackfriars Road  
Nailsea, Bristol, BS48 4DJ

While every effort has been made to ensure that the details in this brochure are correct at the time of print, we cannot accept responsibility for any errors or omissions.