

Technical Data Sheet

Cable Tray / Pre Galvanised / Accessories / Adjustable Riser / Page 1 of 3

British Standard:

BS EN 61537: 2007

Material Specification:

British Standard: BS EN 10346:2015.

Finish:

Pre Galvanised

Ordering Information:

- Please refer to the following pages or alternatively visit our website below:

<http://www.trenchltd.com>

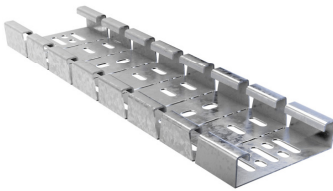


Illustration shown is medium duty

Product Information:

- All cable tray accessories have a female connection which eliminates the need for couplers when connecting to lengths
- When connecting two accessories together a small piece of cable tray will be required
- Light duty accessories do not have a return flange refer to cable tray lengths data sheet for more information
- Can be manipulated to make either internal or external riser
- To suit tray up to 300mm wide only

Packing Detail:

1 x adjustable riser

Other Options Available:

- Powder Coated
- Alternative Width/Height/Material Thickness
- Non Perforated (Plain)

Technical Data Sheet

Cable Tray / Pre Galvanised / Accessories / Adjustable Riser / Ordering Information / Page 2 of 3

Powder Coated

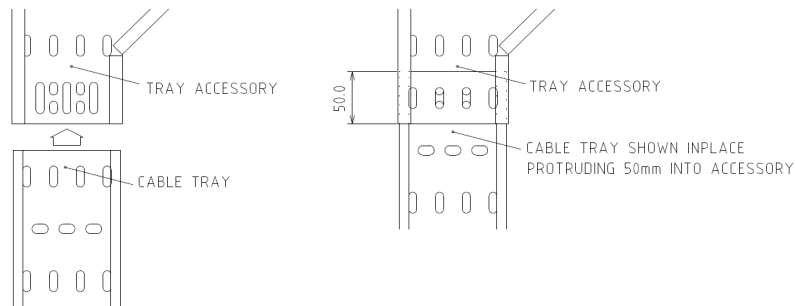
Please ensure that when requesting a quotation for any powder coated products that you have the correct quantities, RAL number and finish (i.e. matt or gloss) in order for us to quote accordingly. Product codes for powder coated items are non-standard, however, dimensions and weights listed in the table on Page 3 are still applicable.

Cable Tray Accessories - Connection to Lengths

All cable tray accessories have a female connection which eliminates the need for couplers when connecting to lengths. When connecting accessory to accessory a short piece of cable tray will be required.

Please see below illustration detailing overlay.

** Fixings not supplied



Technical Data Sheet

Cable Tray / Pre Galvanised / Accessories / Adjustable Riser / Dimension & Weights Table / Page 3 of 3

Product Code	Dim A (mm) To Suit Width	Dim B (mm) To Suit Height	Dim C (mm) <i>*Refer Below</i>	Dim D (mm)	Weight (kg)
LDT050ADJ	50	12.5	364	N/A	0.18
LDT075ADJ	75	12.5	364	N/A	0.24
LDT100ADJ	100	12.5	364	N/A	0.29
LDT150ADJ	150	12.5	364	N/A	0.39
LDT225ADJ	225	12.5	364	N/A	0.54
LDT300ADJ	300	20	364	N/A	0.73
MDT050ADJ	50	25	364	N/A	0.32
MDT075ADJ	75	25	364	N/A	0.38
MDT100ADJ	100	25	364	N/A	0.43
MDT150ADJ	150	25	364	N/A	0.53
MDT225ADJ	225	25	364	N/A	0.68
MDT300ADJ	300	25	364	N/A	0.84
HDT050ADJ	50	50	550	N/A	0.67
HDT075ADJ	75	50	550	N/A	0.76
HDT100ADJ	100	50	550	N/A	0.84
HDT150ADJ	150	50	550	N/A	1.01
HDT225ADJ	225	50	550	N/A	1.26
HDT300ADJ	300	50	550	N/A	1.51

Approximate weights shown are a nominal value due to material thickness and tolerance . For 450mm & above please use standard internal 90 & external 90 bends. ** This dimension requires consideration of "male to female" coupling see information on Page 2 "connection to lengths".*

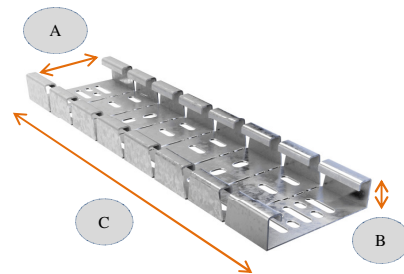


Illustration shown is medium duty